

Product datasheet for **TA700408**

Ephrin A2 (EFNA2) Biotinylated Mouse Monoclonal Detection Antibody (Biotin conjugated) [Clone ID: OTI1C9]

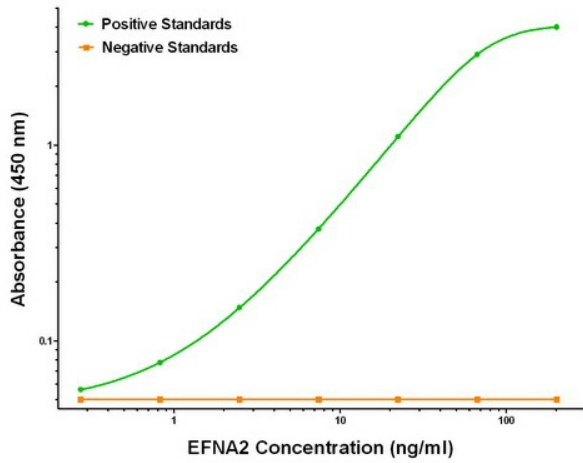
Product data:

Product Type:	Primary Antibodies
Clone Name:	OTI1C9
Applications:	ELISA
Recommended Dilution:	ELISA 1:250-1:1000
Reactivity:	Human, Mouse, Rat
Host:	Mouse
Isotype:	IgG1
Clonality:	Monoclonal
Immunogen:	Full length human recombinant protein of human EFNA2 (NM_001405) produced in HEK293T cell.
Formulation:	Stored in PBS (pH 7.4) with 0.05% sodium azide, 10mg/ml BSA, 50% glycerol
Concentration:	0.5 mg/ml
Conjugation:	Biotin
Storage:	Store at -20°C as received.
Stability:	Stable for 12 months from date of receipt.
Gene Name:	ephrin A2
Database Link:	NP_001396 Entrez Gene 13637 Mouse Entrez Gene 1943 Human O43921
Synonyms:	ELF-1; EPLG6; HEK7-L; LERK-6; LERK6
Matched ELISA Pair:	TA600408
Protein Families:	Druggable Genome
Protein Pathways:	Axon guidance

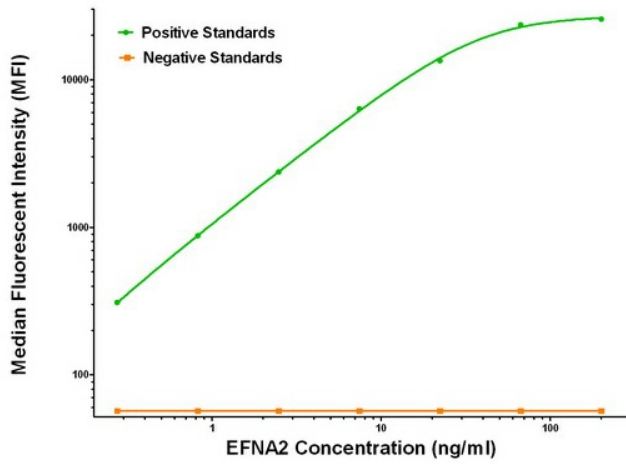


[View online »](#)

Product images:



EFNA2 ELISA with 1E12 Capture ([TA600408]) and 1C9 Detection (TA700408) Antibodies. Substrate used: Recombinant Human EFNA2 ([TP313728])



EFNA2 Luminex ELISA with 1E12 Capture ([TA600408]) and 1C9 Detection (TA700408) Antibodies. Substrate used: Recombinant Human EFNA2 ([TP313728])