

Product datasheet for **TA700406**

Cystatin SA (CST2) Biotinylated Mouse Monoclonal Detection Antibody (Biotin conjugated) **[Clone ID: OTI1D6]**

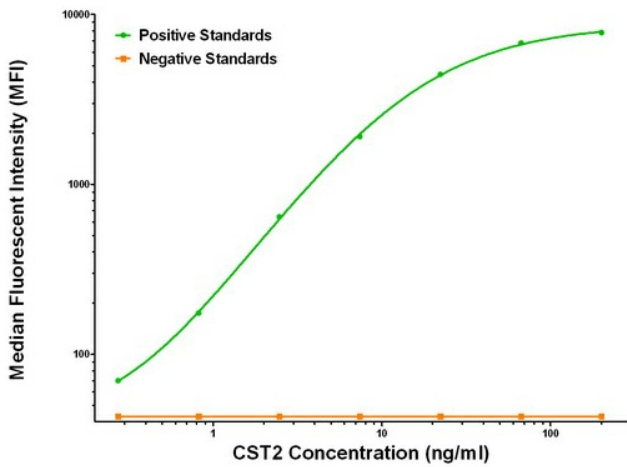
Product data:

Product Type:	Primary Antibodies
Clone Name:	OTI1D6
Applications:	ELISA
Recommended Dilution:	ELISA 1:250-1:1000
Reactivity:	Human
Host:	Mouse
Isotype:	IgG1
Clonality:	Monoclonal
Immunogen:	Full length human recombinant protein of human CST2 (NM_001322) produced in HEK293T cell.
Formulation:	Stored in PBS (pH 7.4) with 0.05% sodium azide, 10mg/ml BSA, 50% glycerol
Concentration:	0.5 mg/ml
Conjugation:	Biotin
Storage:	Store at -20°C as received.
Stability:	Stable for 12 months from date of receipt.
Gene Name:	cystatin SA
Database Link:	NP_001313 Entrez Gene 1470 Human P09228
Synonyms:	MGC71924
Protein Families:	Secreted Protein



[View online »](#)

Product images:



CST2 Luminex ELISA with Anti-Tag 1B12 Capture ([TA600050]) and 1D6 Detection ([TA700050]) Antibodies. Substrate used: Recombinant Human CST2 ([TP309350])