

Product datasheet for **TA700404**

EPHX2 Biotinylated detection Mouse Monoclonal Antibody [Clone ID: OTI1A6]

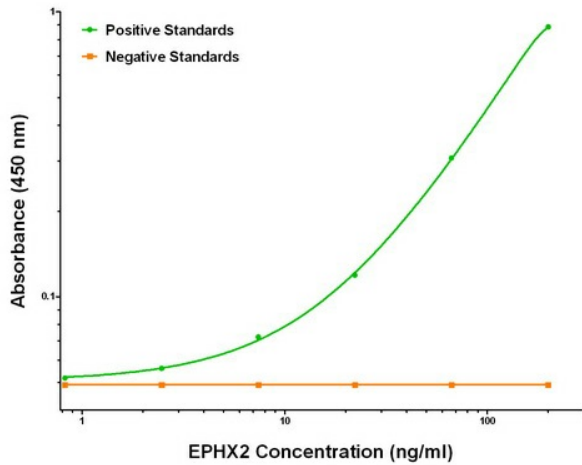
Product data:

Product Type:	Primary Antibodies
Clone Name:	OTI1A6
Applications:	ELISA, LMNX
Recommend Dilution:	1:250 - 1:1000
Reactivity:	Human
Host:	Mouse
Isotype:	IgG1
Clonality:	Monoclonal
Immunogen:	Full length human recombinant protein of human EPHX2 (NM_001979) produced in HEK293T cell.
Formulation:	Stored in PBS (pH 7.4) with 0.05% sodium azide, 10mg/ml BSA, 50% glycerol
Concentration:	0.5 mg/ml
Storage:	Store at -20°C as received.
Stability:	Stable for 12 months from date of receipt.
Gene Name:	epoxide hydrolase 2
Database Link:	NP_001970 Entrez Gene 2053 Human
Synonyms:	CEH; SEH
Matched ELISA Pair:	TA600404
Protein Pathways:	Arachidonic acid metabolism, Metabolic pathways

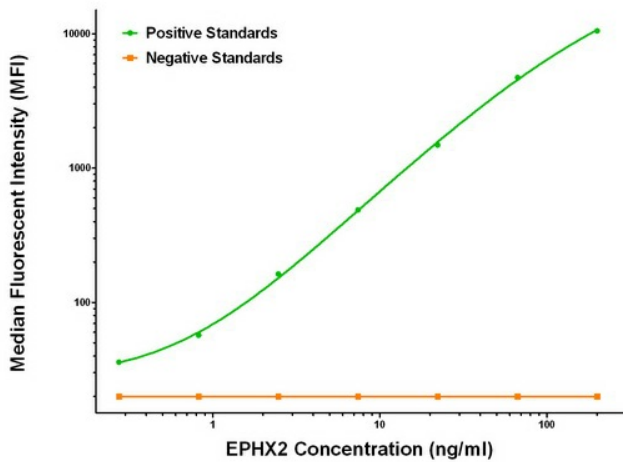


[View online »](#)

Product images:



EPHX2 ELISA with 1H5 Capture ([TA600404]) and 1A6 Detection (TA700404) Antibodies. Substrate used: Recombinant Human EPHX2 ([TP302489])



EPHX2 Luminex ELISA with 1H5 Capture ([TA600404]) and 1A6 Detection (TA700404) Antibodies. Substrate used: Recombinant Human EPHX2 ([TP302489])