

## Product datasheet for **TA700403**

### **EPHX2 Biotinylated Mouse Monoclonal Detection Antibody (Biotin conjugated) [Clone ID: OTI1H5]**

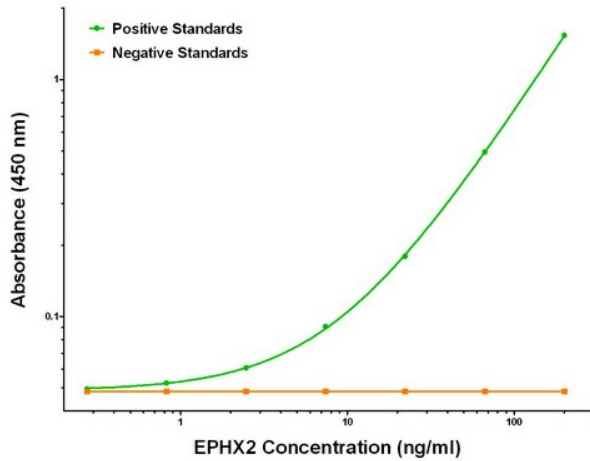
#### **Product data:**

Product Type:	Primary Antibodies
Clone Name:	OTI1H5
Applications:	ELISA
Recommended Dilution:	ELISA 1:250-1:1000
Reactivity:	Human
Host:	Mouse
Isotype:	IgG1
Clonality:	Monoclonal
Immunogen:	Full length human recombinant protein of human EPHX2 (NM_001979) produced in HEK293T cell.
Formulation:	Stored in PBS (pH 7.4) with 0.05% sodium azide, 10mg/ml BSA, 50% glycerol
Concentration:	0.5 mg/ml
Conjugation:	Biotin
Storage:	Store at -20°C as received.
Stability:	Stable for 12 months from date of receipt.
Gene Name:	epoxide hydrolase 2
Database Link:	<a href="#">NP_001970</a> <a href="#">Entrez Gene 2053 Human P34913</a>
Synonyms:	CEH; SEH
Matched ELISA Pair:	TA600403, TA600405
Protein Pathways:	Arachidonic acid metabolism, Metabolic pathways

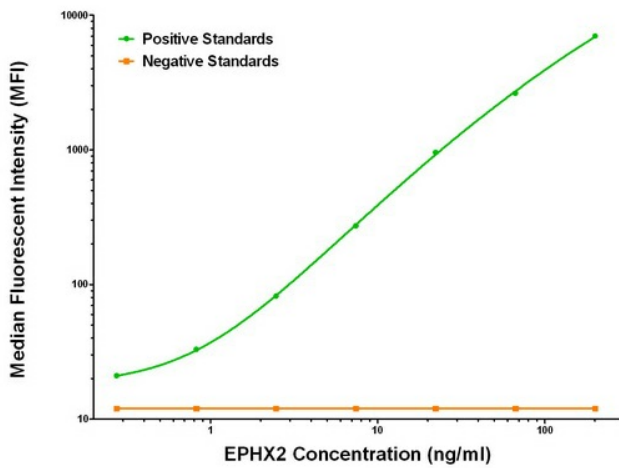


[View online »](#)

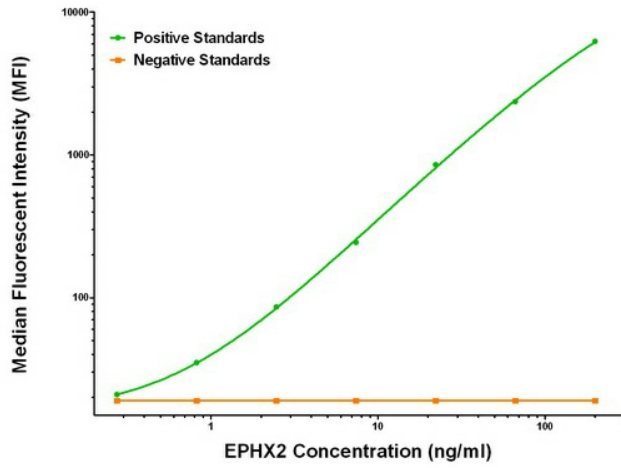
**Product images:**



EPHX2 ELISA with 2F2 Capture ([TA600405]) and 1H5 Detection (TA700403) Antibodies. Substrate used: Recombinant Human EPHX2 ([TP302489])



EPHX2 Luminex ELISA with 1A6 Capture ([TA600403]) and 1H5 Detection (TA700403) Antibodies. Substrate used: Recombinant Human EPHX2 ([TP302489])



EPHX2 Luminex ELISA with 2F2 Capture ([TA600405]) and 1H5 Detection (TA700403) Antibodies. Substrate used: Recombinant Human EPHX2 ([TP302489])