

## Product datasheet for **TA700402**

### **Haptoglobin (HP) Biotinylated Mouse Monoclonal Detection Antibody (Biotin conjugated) [Clone ID: OTI6H2]**

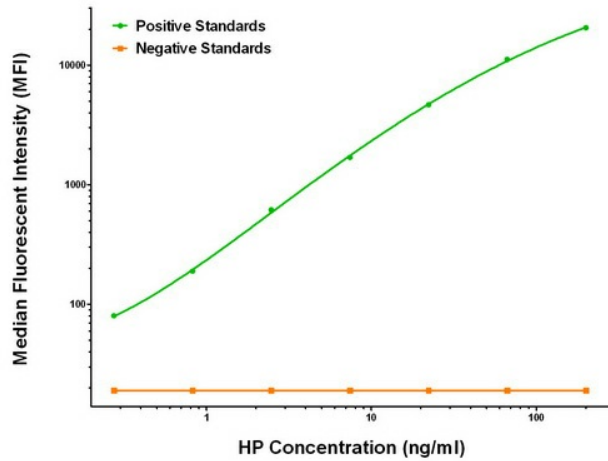
#### **Product data:**

Product Type:	Primary Antibodies
Clone Name:	OTI6H2
Applications:	ELISA
Recommended Dilution:	ELISA 1:250-1:1000
Reactivity:	Human
Host:	Mouse
Isotype:	IgG1
Clonality:	Monoclonal
Immunogen:	Full length human recombinant protein of human HP (NM_005143) produced in HEK293T cell.
Formulation:	Stored in PBS (pH 7.4) with 0.05% sodium azide, 10mg/ml BSA, 50% glycerol
Concentration:	0.5 mg/ml
Conjugation:	Biotin
Storage:	Store at -20°C as received.
Stability:	Stable for 12 months from date of receipt.
Gene Name:	haptoglobin
Database Link:	<a href="#">NP_005134</a> <a href="#">Entrez Gene 3240 Human</a> <a href="#">P00738</a>
Synonyms:	BP; HP2ALPHA2; HPA1S
Matched ELISA Pair:	TA600400
Protein Families:	Druggable Genome, Protease, Secreted Protein, Transmembrane



[View online »](#)

## Product images:



HP Luminex ELISA with 2B8 Capture ([TA600400]) and 6H2 Detection (TA700402) Antibodies. Substrate used: Recombinant Human HP ([TP323612])