

Product datasheet for TA700399

Haptoglobin (HP) Biotinylated detection Mouse Monoclonal Antibody [Clone ID: OTI2B8]

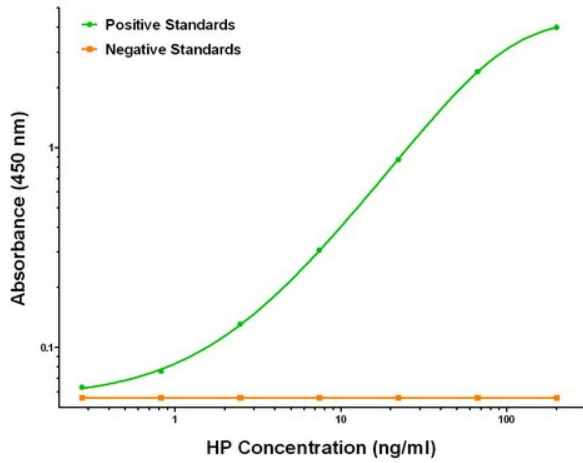
Product data:

Product Type:	Primary Antibodies
Clone Name:	OTI2B8
Applications:	ELISA, LMNX
Recommend Dilution:	ELISA, LMNX
Reactivity:	Human
Host:	Mouse
Isotype:	IgG1
Clonality:	Monoclonal
Immunogen:	Full length human recombinant protein of human HP (NM_005143) produced in HEK293T cell.
Formulation:	Stored in PBS (pH 7.4) with 0.05% sodium azide, 10mg/ml BSA, 50% glycerol
Concentration:	0.5 mg/ml
Gene Name:	haptoglobin
Database Link:	NP_005134 Entrez Gene 3240 Human
Synonyms:	BP; HP2ALPHA2; HPA1S
Matched ELISA Pair:	TA600399
Protein Families:	Druggable Genome, Protease, Secreted Protein, Transmembrane

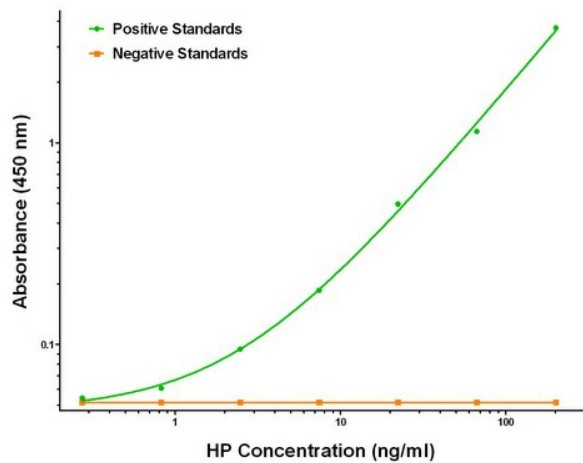


[View online »](#)

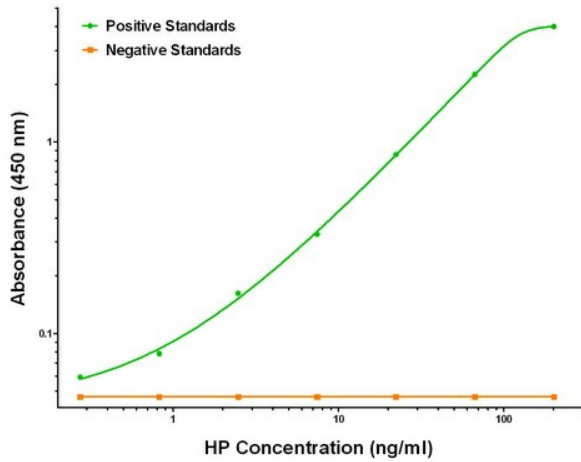
Product images:



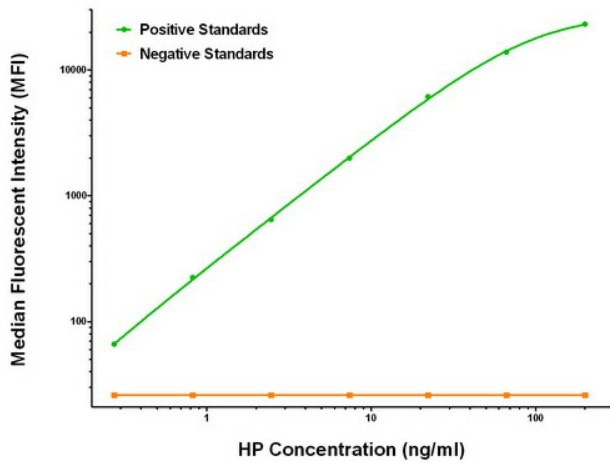
HP ELISA with 1F9 Capture (TA600399) and 2B8 Detection (TA700399) Antibodies. Substrate used: Recombinant Human HP (TP323612)



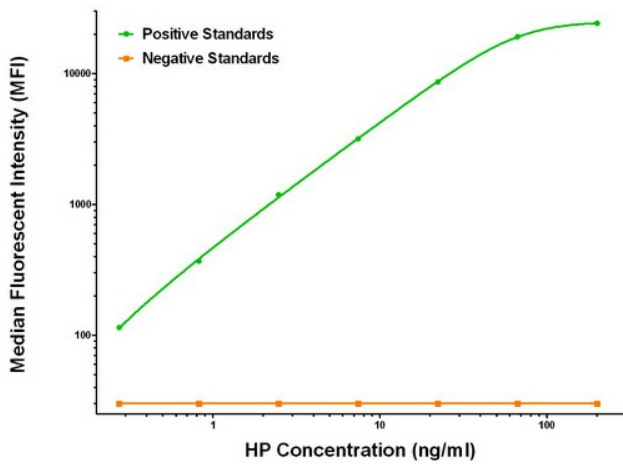
HP ELISA with 4C2 Capture (TA600401) and 2B8 Detection (TA700399) Antibodies. Substrate used: Recombinant Human HP (TP323612)



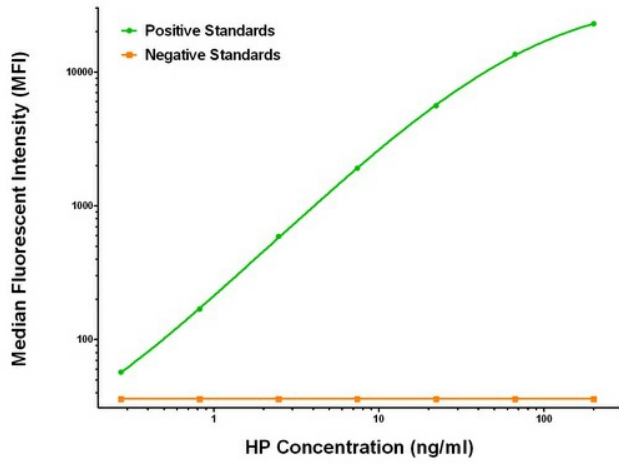
HP ELISA with 6H2 Capture (TA600402) and 2B8 Detection (TA700399) Antibodies. Substrate used: Recombinant Human HP (TP323612)



HP Luminex ELISA with 1F9 Capture (TA600399) and 2B8 Detection (TA700399) Antibodies. Substrate used: Recombinant Human HP (TP323612)



HP Luminex ELISA with 4C2 Capture (TA600401) and 2B8 Detection (TA700399) Antibodies. Substrate used: Recombinant Human HP (TP323612)



HP Luminex ELISA with 6H2 Capture (TA600402) and 2B8 Detection (TA700399) Antibodies. Substrate used: Recombinant Human HP (TP323612)