

Product datasheet for **TA700395**

ALDH1L1 Biotinylated Mouse Monoclonal Detection Antibody (Biotin conjugated) [Clone ID: OTI5G8]

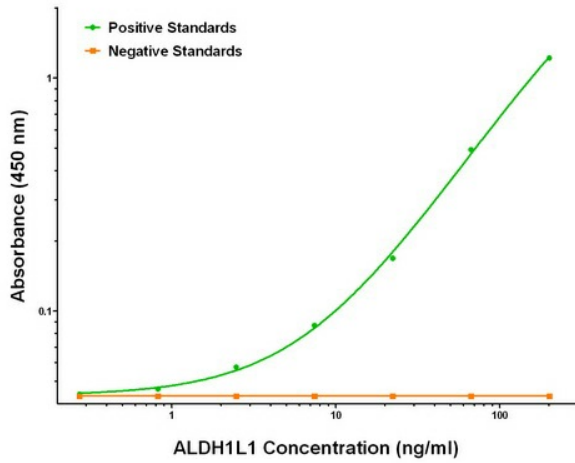
Product data:

Product Type:	Primary Antibodies
Clone Name:	OTI5G8
Applications:	ELISA
Recommended Dilution:	ELISA 1:250-1:1000
Reactivity:	Human, Mouse, Rat
Host:	Mouse
Isotype:	IgG1
Clonality:	Monoclonal
Immunogen:	Full length human recombinant protein of human ALDH1L1 (NM_012190) produced in HEK293T cell.
Formulation:	Stored in PBS (pH 7.4) with 0.05% sodium azide, 10mg/ml BSA, 50% glycerol
Concentration:	0.5 mg/ml
Conjugation:	Biotin
Storage:	Store at -20°C as received.
Stability:	Stable for 12 months from date of receipt.
Gene Name:	aldehyde dehydrogenase 1 family member L1
Database Link:	NP_036322 Entrez Gene 64392 Rat Entrez Gene 10840 Human O75891
Synonyms:	10-fTHF; 10-FTHFDH; FDH; FTHFD
Matched ELISA Pair:	TA600394, TA600395, TA600398
Protein Families:	Druggable Genome
Protein Pathways:	One carbon pool by folate

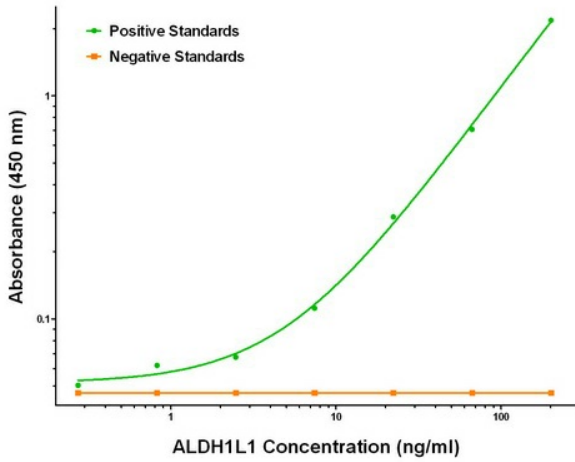


[View online »](#)

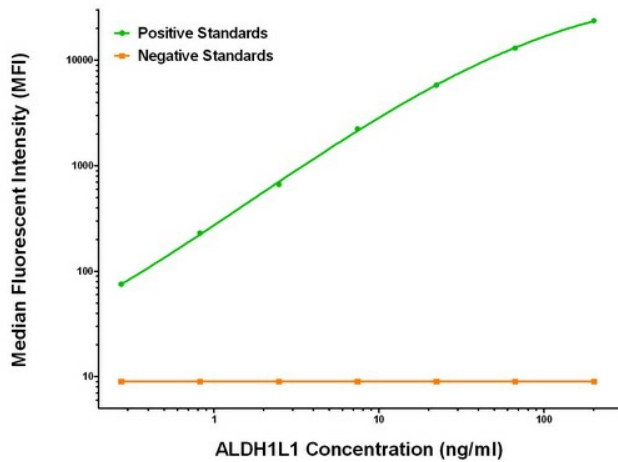
Product images:



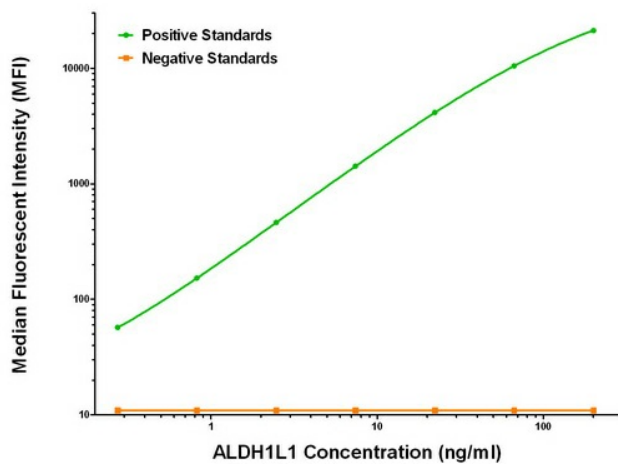
ALDH1L1 ELISA with 2A6 Capture ([TA600395]) and 5G8 Detection (TA700395) Antibodies. Substrate used: Recombinant Human ALDH1L1 ([TP313720])



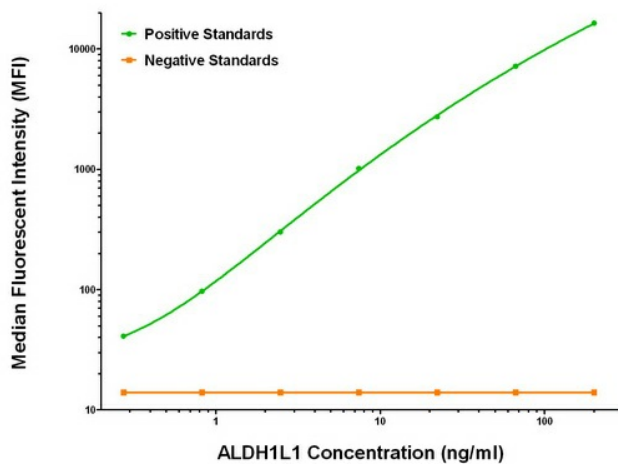
ALDH1L1 ELISA with 7G6 Capture ([TA600398]) and 5G8 Detection (TA700395) Antibodies. Substrate used: Recombinant Human ALDH1L1 ([TP313720])



ALDH1L1 Luminex ELISA with 1H6 Capture ([TA600394]) and 5G8 Detection (TA700395) Antibodies. Substrate used: Recombinant Human ALDH1L1 ([TP313720])



ALDH1L1 Luminex ELISA with 2A6 Capture ([TA600395]) and 5G8 Detection (TA700395) Antibodies. Substrate used: Recombinant Human ALDH1L1 ([TP313720])



ALDH1L1 Luminex ELISA with 7G6 Capture ([TA600398]) and 5G8 Detection (TA700395) Antibodies. Substrate used: Recombinant Human ALDH1L1 ([TP313720])