

Product datasheet for **TA700378**

Calpain 9 (CAPN9) Biotinylated Mouse Monoclonal Detection Antibody (Biotin conjugated) [Clone ID: OTI2G1]

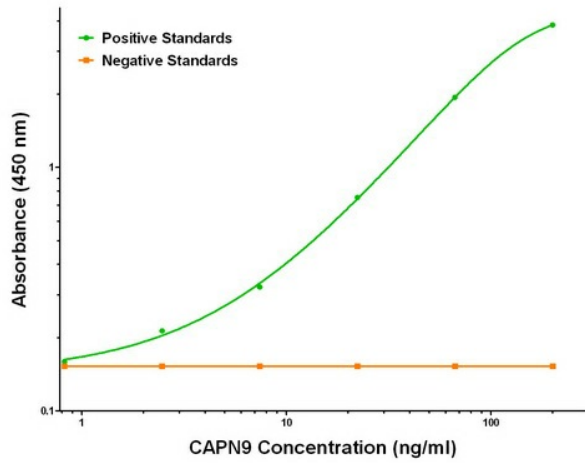
Product data:

Product Type:	Primary Antibodies
Clone Name:	OTI2G1
Applications:	ELISA
Recommended Dilution:	ELISA 1:250-1:1000
Reactivity:	Human, Mouse, Rat
Host:	Mouse
Isotype:	IgG1
Clonality:	Monoclonal
Immunogen:	Full length human recombinant protein of human CAPN9 (NM_006615) produced in HEK293T cell.
Formulation:	Stored in PBS (pH 7.4) with 0.05% sodium azide, 10mg/ml BSA, 50% glycerol
Concentration:	0.5 mg/ml
Conjugation:	Biotin
Storage:	Store at -20°C as received.
Stability:	Stable for 12 months from date of receipt.
Gene Name:	calpain 9
Database Link:	NP_006606 Entrez Gene 116694 RatEntrez Gene 10753 Human O14815
Synonyms:	GC36; nCL-4
Matched ELISA Pair:	TA600378, TA600380
Protein Families:	Druggable Genome, Protease

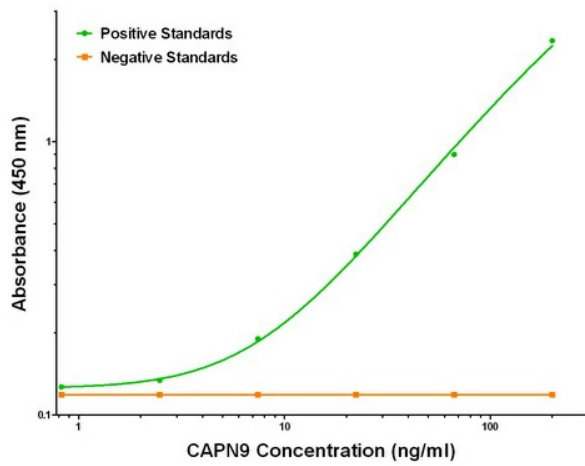


[View online »](#)

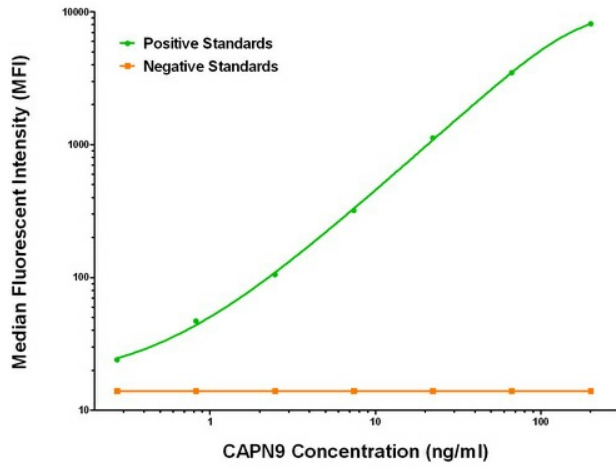
Product images:



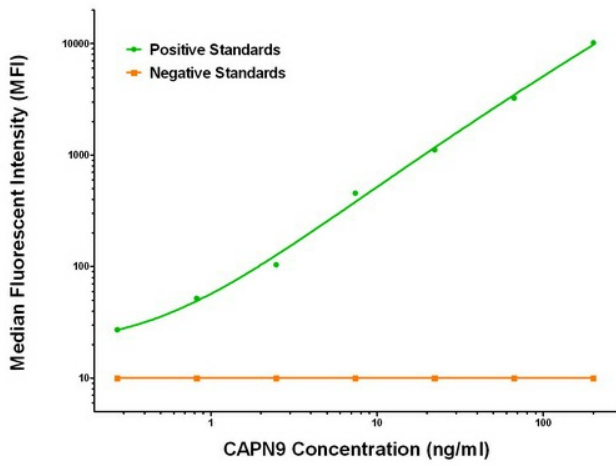
CAPN9 ELISA with 1C2 Capture ([TA600378]) and 2G1 Detection (TA700378) Antibodies. Substrate used: Recombinant Human CAPN9 ([TP315171])



CAPN9 ELISA with 3G10 Capture ([TA600380]) and 2G1 Detection (TA700378) Antibodies. Substrate used: Recombinant Human CAPN9 ([TP315171])



CAPN9 Luminex Elisa with 1C2 Capture ([TA600378]) and 2G1 Detection (TA700378) Antibodies. Substrate used: Recombinant Human CAPN9 ([TP315171])



CAPN9 Luminex Elisa with 3G10 Capture ([TA600380]) and 2G1 Detection (TA700378) Antibodies. Substrate used: Recombinant Human CAPN9 ([TP315171])