

Product datasheet for **TA700375**

CD33 Biotinylated Mouse Monoclonal Detection Antibody (Biotin conjugated) [Clone ID: OTI1E10]

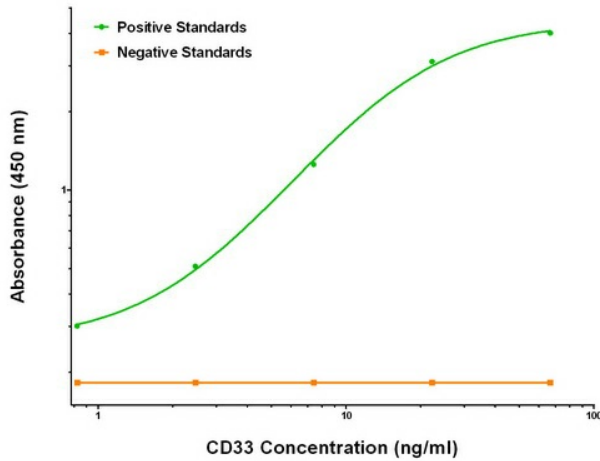
Product data:

Product Type:	Primary Antibodies
Clone Name:	OTI1E10
Applications:	ELISA, LMNX
Recommended Dilution:	1:250 - 1:1000
Reactivity:	Human
Host:	Mouse
Isotype:	IgG1
Clonality:	Monoclonal
Immunogen:	Full length human recombinant protein of human CD33 (NM_001772) produced in HEK293T cell.
Formulation:	Stored in PBS (pH 7.4) with 0.05% sodium azide, 10mg/ml BSA, 50% glycerol
Concentration:	0.5 mg/ml
Conjugation:	Biotin
Storage:	Store at -20°C as received.
Stability:	Stable for 12 months from date of receipt.
Gene Name:	CD33 molecule
Database Link:	NP_001763 Entrez Gene 945 Human P20138
Synonyms:	p67; SIGLEC-3; SIGLEC3
Matched ELISA Pair:	TA600375, TA600376
Protein Families:	Druggable Genome, Transmembrane
Protein Pathways:	Hematopoietic cell lineage

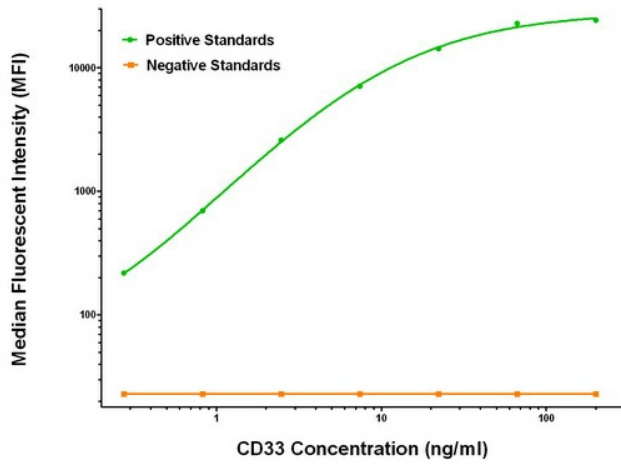


[View online »](#)

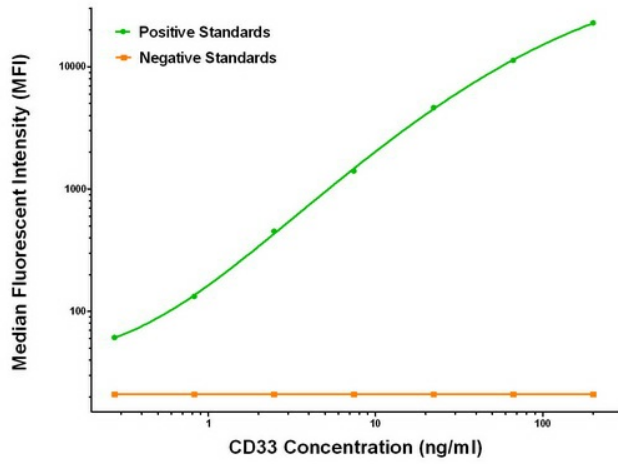
Product images:



CD33 ELISA with 2B2 Capture ([TA600375]) and 1E10 Detection (TA700375) Antibodies. Substrate used: Recombinant Human CD33 ([TP307023])



CD33 Luminex Elisa with 2B2 Capture ([TA600375]) and 1E10 Detection (TA700375) Antibodies. Substrate used: Recombinant Human CD33 ([TP307023])



CD33 Luminex Elisa with 2E4 Capture ([TA600376]) and 1E10 Detection (TA700375) Antibodies. Substrate used: Recombinant Human CD33 ([TP307023])