

## Product datasheet for **TA700373**

### CD33 Biotinylated Mouse Monoclonal Detection Antibody (Biotin conjugated) [Clone ID: OTI2F8]

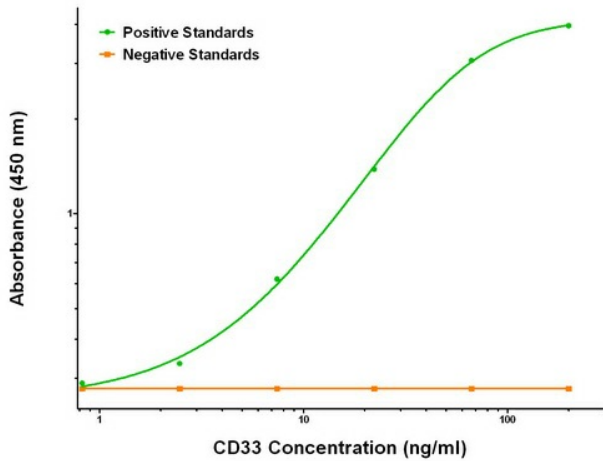
#### Product data:

Product Type:	Primary Antibodies
Clone Name:	OTI2F8
Applications:	ELISA, LMNX
Recommended Dilution:	1:250 - 1:1000
Reactivity:	Human
Host:	Mouse
Isotype:	IgG1
Clonality:	Monoclonal
Immunogen:	Full length human recombinant protein of human CD33 (NM_001772) produced in HEK293T cell.
Formulation:	Stored in PBS (pH 7.4) with 0.05% sodium azide, 10mg/ml BSA, 50% glycerol
Concentration:	0.5 mg/ml
Conjugation:	Biotin
Storage:	Store at -20°C as received.
Stability:	Stable for 12 months from date of receipt.
Gene Name:	CD33 molecule
Database Link:	<a href="#">NP_001763</a> <a href="#">Entrez Gene 945 Human P20138</a>
Synonyms:	p67; SIGLEC-3; SIGLEC3
Matched ELISA Pair:	TA600373
Protein Families:	Druggable Genome, Transmembrane
Protein Pathways:	Hematopoietic cell lineage

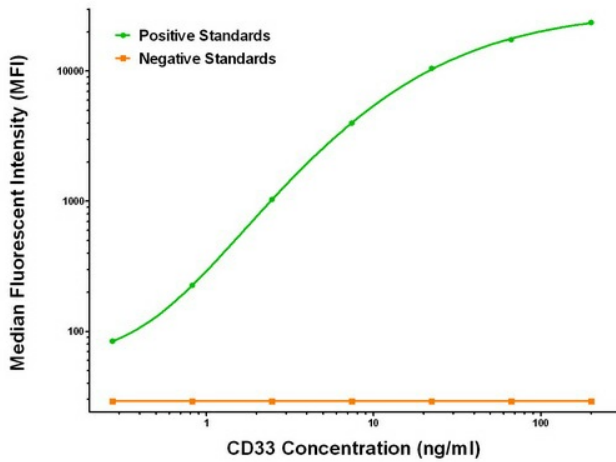


[View online »](#)

Product images:



CD33 ELISA with 1E4 Capture ([TA600373]) and 2F8 Detection (TA700373) Antibodies. Substrate used: Recombinant Human CD33 ([TP307023])



CD33 Luminex Elisa with 1E4 Capture ([TA600373]) and 2F8 Detection (TA700373) Antibodies. Substrate used: Recombinant Human CD33 ([TP307023])