

Product datasheet for **TA700372**

CD33 Biotinylated Mouse Monoclonal Detection Antibody (Biotin conjugated) [Clone ID: OTI1B10]

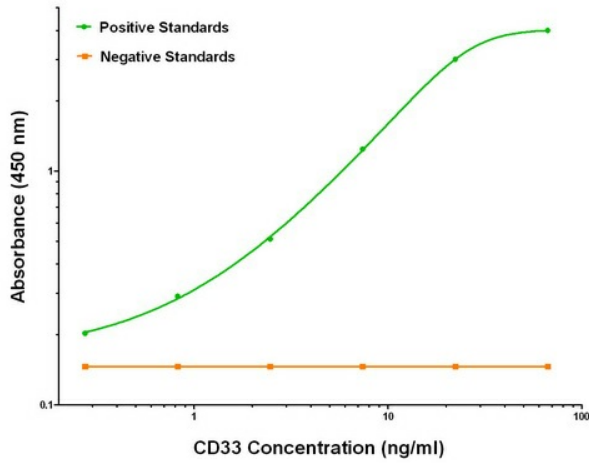
Product data:

| | |
|-----------------------|---|
| Product Type: | Primary Antibodies |
| Clone Name: | OTI1B10 |
| Applications: | ELISA, LMNX |
| Recommended Dilution: | 1:250 - 1:1000 |
| Reactivity: | Human |
| Host: | Mouse |
| Isotype: | IgG1 |
| Clonality: | Monoclonal |
| Immunogen: | Full length human recombinant protein of human CD33 (NM_001772) produced in HEK293T cell. |
| Formulation: | Stored in PBS (pH 7.4) with 0.05% sodium azide, 10mg/ml BSA, 50% glycerol |
| Concentration: | 0.5 mg/ml |
| Conjugation: | Biotin |
| Storage: | Store at -20°C as received. |
| Stability: | Stable for 12 months from date of receipt. |
| Gene Name: | CD33 molecule |
| Database Link: | NP_001763 Entrez Gene 945 Human P20138 |
| Synonyms: | p67; SIGLEC-3; SIGLEC3 |
| Matched ELISA Pair: | TA600372, TA600373 |
| Protein Families: | Druggable Genome, Transmembrane |
| Protein Pathways: | Hematopoietic cell lineage |

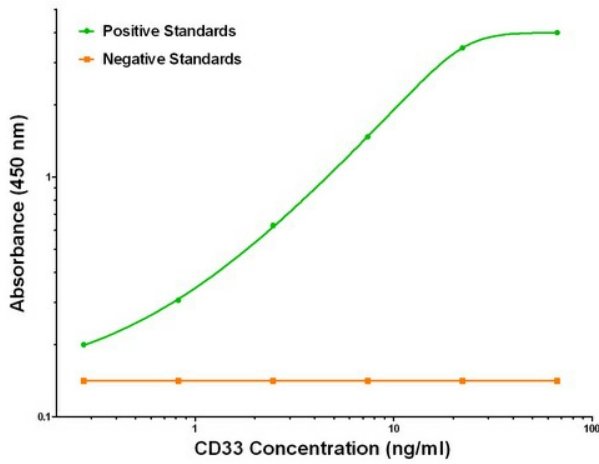


[View online »](#)

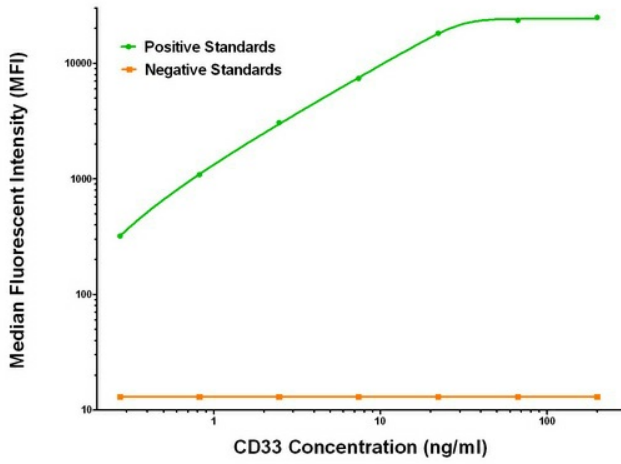
Product images:



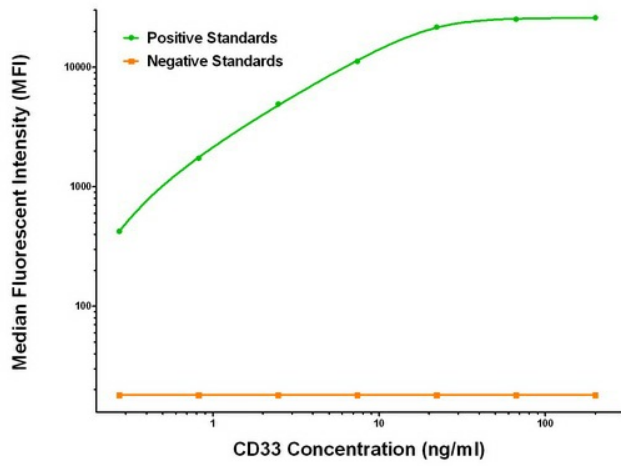
CD33 ELISA with 1C4 Capture ([TA600372]) and 1B10 Detection (TA700372) Antibodies. Substrate used: Recombinant Human CD33 ([TP307023])



CD33 ELISA with 1E4 Capture ([TA600373]) and 1B10 Detection (TA700372) Antibodies. Substrate used: Recombinant Human CD33 ([TP307023])



CD33 Luminex Elisa with 1C4 Capture ([TA600372]) and 1B10 Detection (TA700372) Antibodies. Substrate used: Recombinant Human CD33 ([TP307023])



CD33 Luminex Elisa with 1E4 Capture ([TA600373]) and 1B10 Detection (TA700372) Antibodies. Substrate used: Recombinant Human CD33 ([TP307023])