

## Product datasheet for **TA700359**

### **MAGEB1 Biotinylated Mouse Monoclonal Detection Antibody (Biotin conjugated) [Clone ID: OTI5C12]**

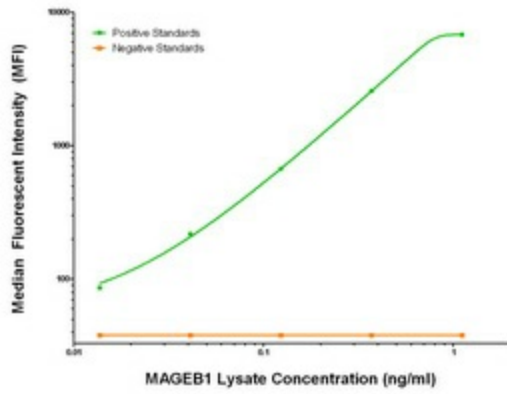
#### **Product data:**

Product Type:	Primary Antibodies
Clone Name:	OTI5C12
Applications:	ELISA
Recommended Dilution:	ELISA 1:250-1:1000
Reactivity:	Human
Host:	Mouse
Isotype:	IgG1
Clonality:	Monoclonal
Immunogen:	Full length human recombinant protein of human MAGEB1 (NM_002363) produced in HEK293T cell.
Formulation:	Stored in PBS (pH 7.4) with 0.05% sodium azide, 10mg/ml BSA, 50% glycerol
Concentration:	0.5 mg/ml
Conjugation:	Biotin
Storage:	Store at -20°C as received.
Stability:	Stable for 12 months from date of receipt.
Gene Name:	MAGE family member B1
Database Link:	<a href="#">NP_002354</a> <a href="#">Entrez Gene 4112 Human P43366</a>
Synonyms:	CT3.1; DAM10; MAGE-Xp; MAGEL1
Matched ELISA Pair:	TA600357



[View online »](#)

Product images:



MAGEB1 Luminex Elisa with 5G7 Capture ([TA600357]) and 5C12 Detection (TA700359) Antibodies. Substrate used: Recombinant Human MAGEB1 ([LY419376])