

Product datasheet for **TA700352**

FATE1 Biotinylated Mouse Monoclonal Detection Antibody (Biotin conjugated) [Clone ID: OTI7B5]

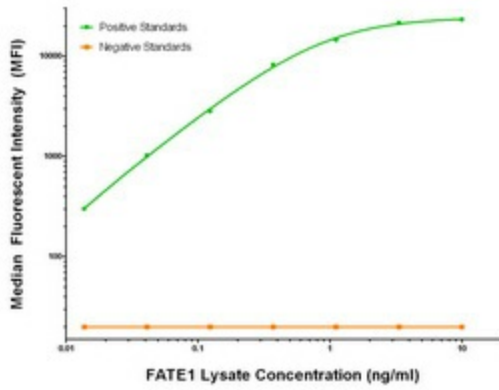
Product data:

Product Type:	Primary Antibodies
Clone Name:	OTI7B5
Applications:	ELISA
Recommended Dilution:	ELISA 1:250-1:1000
Reactivity:	Human
Host:	Mouse
Isotype:	IgG1
Clonality:	Monoclonal
Immunogen:	Full length human recombinant protein of human FATE1 (NM_033085) produced in HEK293T cell.
Formulation:	Stored in PBS (pH 7.4) with 0.05% sodium azide, 10mg/ml BSA, 50% glycerol
Concentration:	0.5 mg/ml
Conjugation:	Biotin
Storage:	Store at -20°C as received.
Stability:	Stable for 12 months from date of receipt.
Gene Name:	fetal and adult testis expressed 1
Database Link:	NP_149076 Entrez Gene 89885 Human Q969F0
Synonyms:	CT43; FATE
Matched ELISA Pair:	TA600352, TA600355
Protein Families:	Transmembrane

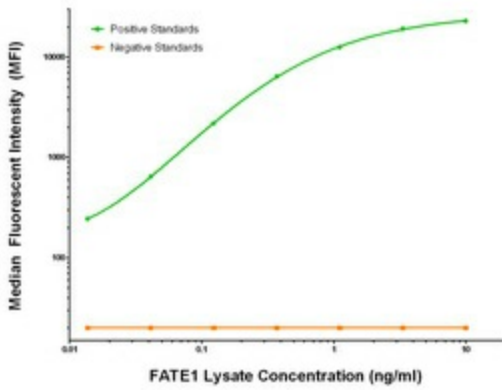


[View online »](#)

Product images:



FATE1 Luminex Elisa with 6F10 Capture ([TA600352]) and 7B5 Detection (TA700352) Antibodies. Substrate used: Recombinant Human FATE1 ([LY409735])



FATE1 Luminex Elisa with 7B12 Capture ([TA600355]) and 7B5 Detection (TA700352) Antibodies. Substrate used: Recombinant Human FATE1 ([LY409735])