

Product datasheet for **TA700343**

Parvin alpha (PARVA) Biotinylated Mouse Monoclonal Detection Antibody (Biotin conjugated) [Clone ID: OTI3H2]

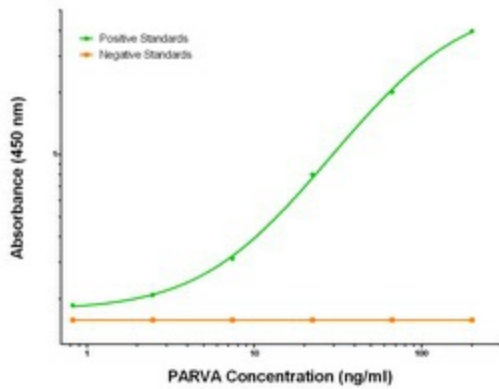
Product data:

Product Type:	Primary Antibodies
Clone Name:	OTI3H2
Applications:	ELISA
Recommended Dilution:	ELISA 1:250-1:1000
Reactivity:	Human, Mouse, Rat
Host:	Mouse
Isotype:	IgG1
Clonality:	Monoclonal
Immunogen:	Full length human recombinant protein of human PARVA (NM_018222) produced in HEK293T cell.
Formulation:	Stored in PBS (pH 7.4) with 0.05% sodium azide, 10mg/ml BSA, 50% glycerol
Concentration:	0.5 mg/ml
Conjugation:	Biotin
Storage:	Store at -20°C as received.
Stability:	Stable for 12 months from date of receipt.
Gene Name:	parvin alpha
Database Link:	NP_060692 Entrez Gene 57341 Rat Entrez Gene 57342 Mouse Entrez Gene 55742 Human Q9NVD7
Synonyms:	CH-ILKBP; MXRA2
Matched ELISA Pair:	TA600346, TA600347, TA600348, TA600349
Protein Pathways:	Focal adhesion

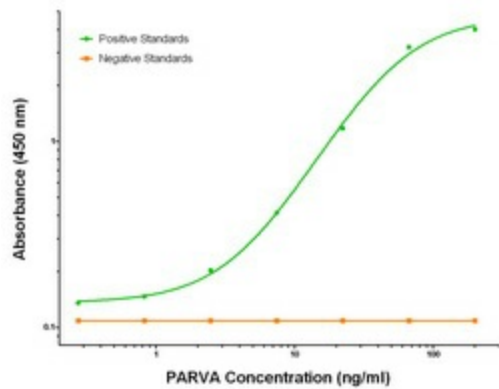


[View online »](#)

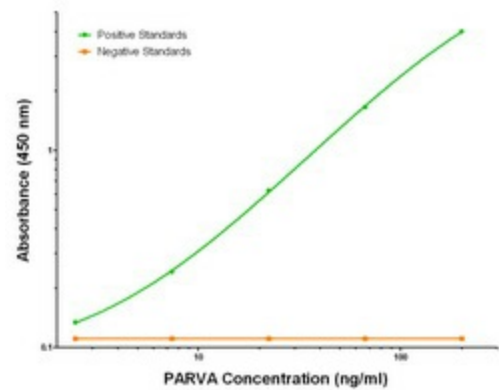
Product images:



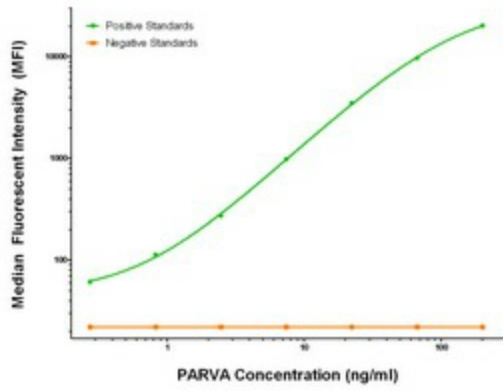
PARVA Elisa with 1H2 Capture ([TA600346]) and 3H2 Detection (TA700343) Antibodies. Substrate used: Recombinant Human PARVA ([TP305086])



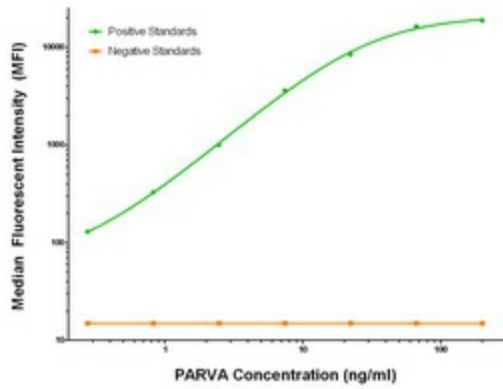
PARVA Elisa with 3G9 Capture ([TA600348]) and 3H2 Detection (TA700343) Antibodies. Substrate used: Recombinant Human PARVA ([TP305086])



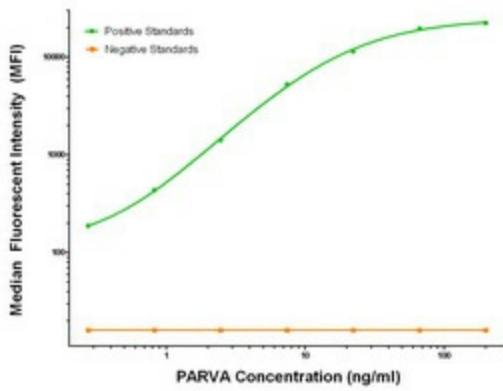
PARVA Elisa with 3C3 Capture ([TA600349]) and 3H2 Detection (TA700343) Antibodies. Substrate used: Recombinant Human PARVA ([TP305086])



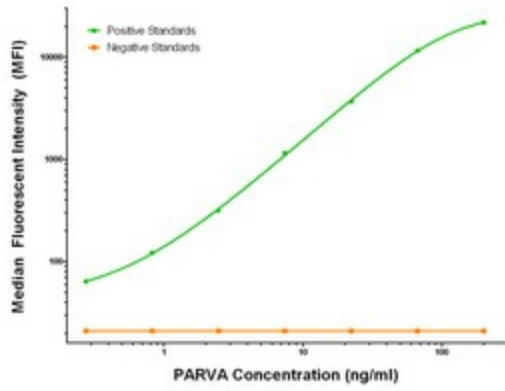
PARVA Luminex Elisa with 1H2 Capture ([TA600346]) and 3H2 Detection (TA700343) Antibodies. Substrate used: Recombinant Human PARVA ([TP305086])



PARVA Luminex Elisa with 2F10 Capture ([TA600347]) and 3H2 Detection (TA700343) Antibodies. Substrate used: Recombinant Human PARVA ([TP305086])



PARVA Luminex Elisa with 3G9 Capture ([TA600348]) and 3H2 Detection (TA700343) Antibodies. Substrate used: Recombinant Human PARVA ([TP305086])



PARVA Luminex Elisa with 3C3 Capture ([TA600349]) and 3H2 Detection (TA700343) Antibodies. Substrate used: Recombinant Human PARVA ([TP305086])