

## Product datasheet for **TA700342**

### Parvin alpha (PARVA) Biotinylated Mouse Monoclonal Detection Antibody (Biotin conjugated) [Clone ID: OTI1H2]

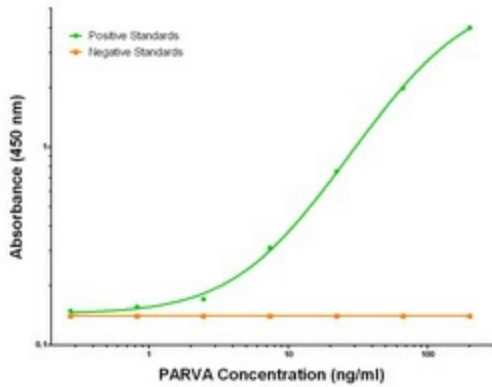
#### Product data:

|                       |  |
|-----------------------|--|
| Product Type:         | Primary Antibodies   |
| Clone Name:           | OTI1H2   |
| Applications:         | ELISA  |
| Recommended Dilution: | ELISA 1:250-1:1000   |
| Reactivity:           | Human, Mouse, Rat  |
| Host:                 | Mouse  |
| Isotype:              | IgG1   |
| Clonality:            | Monoclonal   |
| Immunogen:            | Full length human recombinant protein of human PARVA (NM_018222) produced in HEK293T cell.   |
| Formulation:          | Stored in PBS (pH 7.4) with 0.05% sodium azide, 10mg/ml BSA, 50% glycerol  |
| Concentration:        | 0.5 mg/ml  |
| Conjugation:          | Biotin   |
| Storage:              | Store at -20°C as received.  |
| Stability:            | Stable for 12 months from date of receipt.   |
| Gene Name:            | parvin alpha   |
| Database Link:        | <a href="#">NP_060692</a><br><a href="#">Entrez Gene 57341 Rat</a> <a href="#">Entrez Gene 57342 Mouse</a> <a href="#">Entrez Gene 55742 Human</a><br><a href="#">Q9NVD7</a> |
| Synonyms:             | CH-ILKBP; MXRA2  |
| Matched ELISA Pair:   | TA600342, TA600343, TA600344, TA600345   |
| Protein Pathways:     | Focal adhesion   |

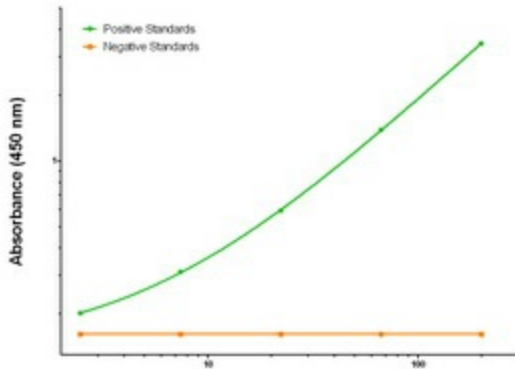


[View online »](#)

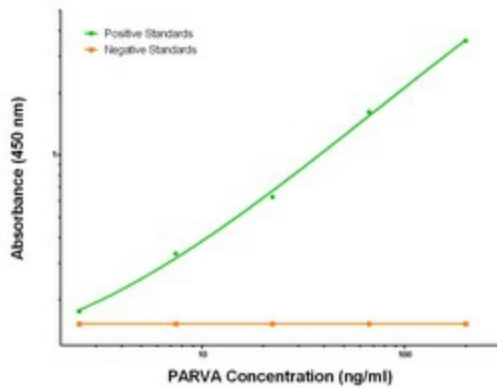
**Product images:**



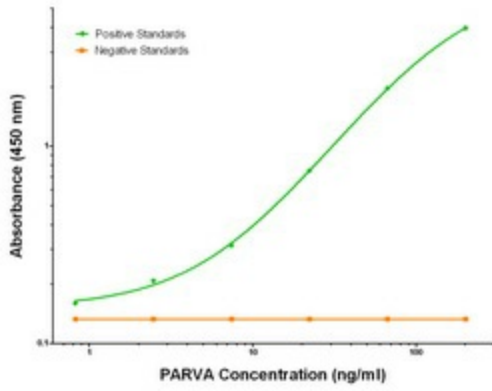
PARVA Elisa with 2G10 Capture ([TA600342]) and 1H2 Detection (TA700342) Antibodies. Substrate used: Recombinant Human PARVA ([TP305086])



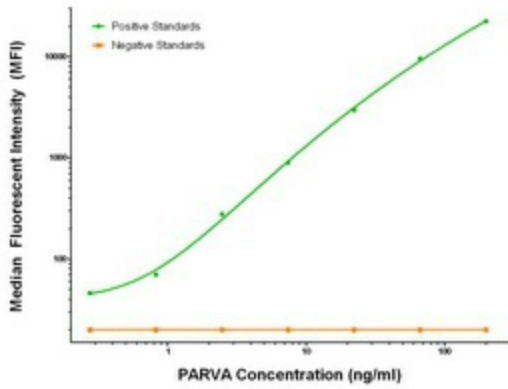
PARVA Elisa with 3H9 Capture ([TA600343]) and 1H2 Detection (TA700342) Antibodies. Substrate used: Recombinant Human PARVA ([TP305086])



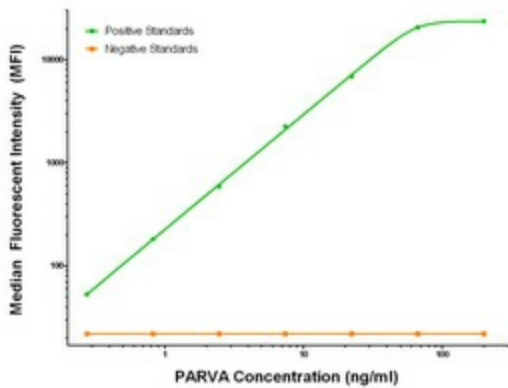
PARVA Elisa with 2C3 Capture ([TA600344]) and 1H2 Detection (TA700342) Antibodies. Substrate used: Recombinant Human PARVA ([TP305086])



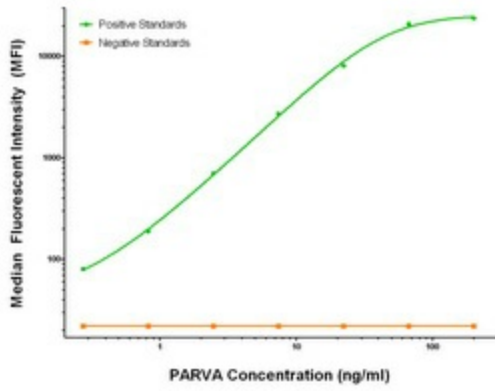
PARVA Elisa with 3H2 Capture ([TA600345]) and 1H2 Detection (TA700342) Antibodies. Substrate used: Recombinant Human PARVA ([TP305086])



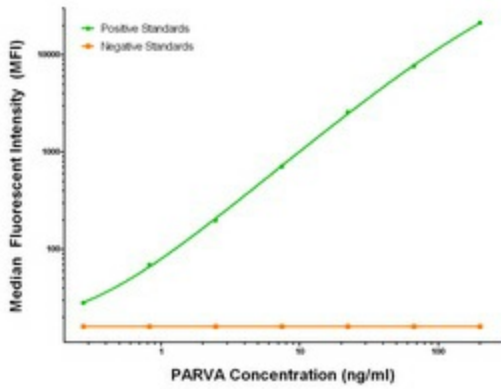
PARVA Luminex Elisa with 2C3 Capture ([TA600344]) and 1H2 Detection (TA700342) Antibodies. Substrate used: Recombinant Human PARVA ([TP305086])



PARVA Luminex Elisa with 2G10 Capture ([TA600342]) and 1H2 Detection (TA700342) Antibodies. Substrate used: Recombinant Human PARVA ([TP305086])



PARVA Luminex Elisa with 3H2 Capture ([TA600345]) and 1H2 Detection (TA700342) Antibodies. Substrate used: Recombinant Human PARVA ([TP305086])



PARVA Luminex Elisa with 3H9 Capture ([TA600343]) and 1H2 Detection (TA700342) Antibodies. Substrate used: Recombinant Human PARVA ([TP305086])