

## Product datasheet for **TA700329**

### **HE4 (WFDC2) Biotinylated Mouse Monoclonal Detection Antibody (Biotin conjugated) [Clone ID: OTI1B9]**

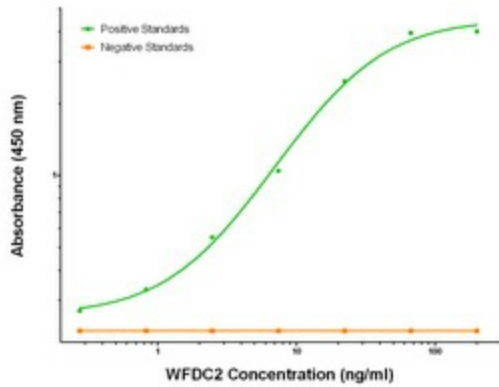
#### Product data:

Product Type:	Primary Antibodies
Clone Name:	OTI1B9
Applications:	ELISA
Recommended Dilution:	ELISA 1:250-1:1000
Reactivity:	Human
Host:	Mouse
Isotype:	IgG1
Clonality:	Monoclonal
Immunogen:	Full length human recombinant protein of human WFDC2 (HE4) (NM_006103) produced in HEK293T cell.
Formulation:	Stored in PBS (pH 7.4) with 0.05% sodium azide, 10mg/ml BSA, 50% glycerol
Concentration:	0.5 mg/ml
Conjugation:	Biotin
Storage:	Store at -20°C as received.
Stability:	Stable for 12 months from date of receipt.
Gene Name:	WAP four-disulfide core domain 2
Database Link:	<a href="#">NP_006094</a> <a href="#">Entrez Gene 10406 Human</a> <a href="#">Q14508</a>
Synonyms:	dj461P17.6; EDDM4; HE4; WAP5
Matched ELISA Pair:	TA600329, TA600332, TA600333
Protein Families:	Secreted Protein, Transmembrane

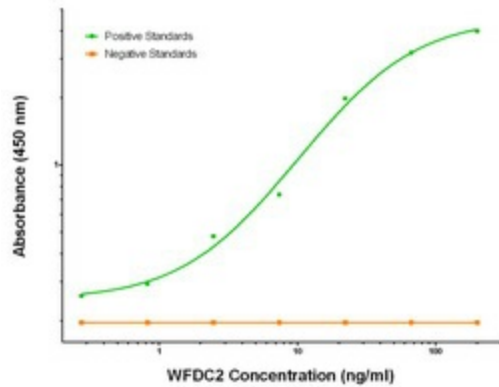


[View online »](#)

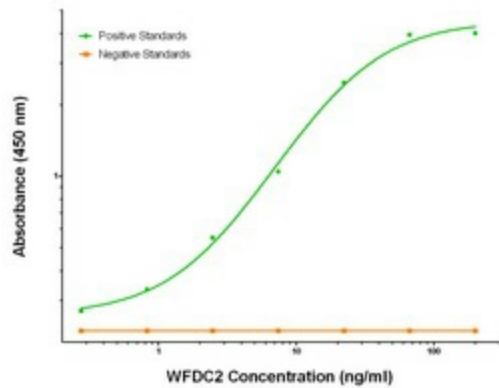
Product images:



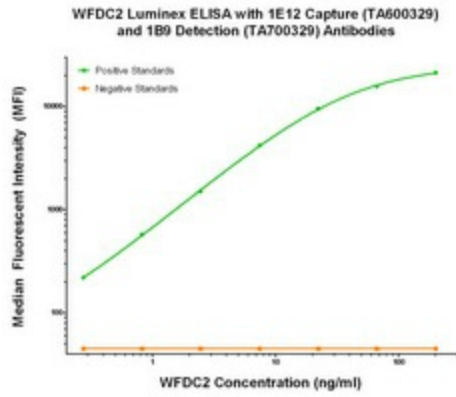
WFDC2 (HE4) Elisa with 1E12 Capture ([TA600329]) and 1B9 Detection (TA700329) Antibodies. Substrate used: Recombinant Human WFDC2 ([TP308491])



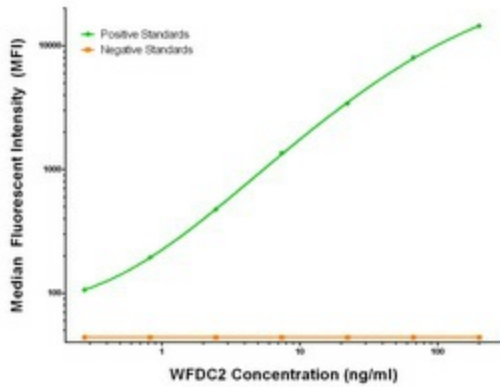
WFDC2 (HE4) Elisa with 3A9 Capture ([TA600332]) and 1B9 Detection (TA700329) Antibodies. Substrate used: Recombinant Human WFDC2 ([TP308491])



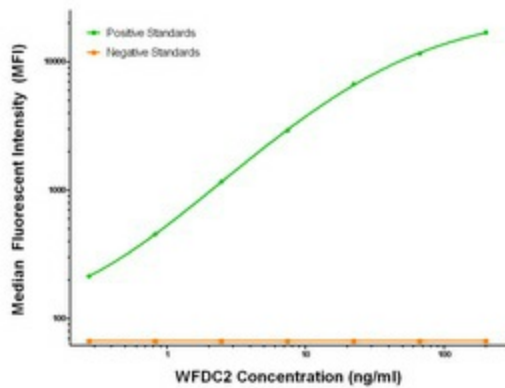
WFDC2 (HE4) Elisa with 1G7 Capture ([TA600333]) and 1B9 Detection (TA700329) Antibodies. Substrate used: Recombinant Human WFDC2 ([TP308491])



WFDC2 (HE4) Luminex Elisa with 1E12 Capture ([TA600329]) and 1B9 Detection (TA700329) Antibodies. Substrate used: Recombinant Human WFDC2 ([TP308491])



WFDC2 (HE4) Luminex Elisa with 1G7 Capture ([TA600333]) and 1B9 Detection (TA700329) Antibodies. Substrate used: Recombinant Human WFDC2 ([TP308491])



WFDC2 (HE4) Luminex Elisa with 3A9 Capture ([TA600332]) and 1B9 Detection (TA700329) Antibodies. Substrate used: Recombinant Human WFDC2 ([TP308491])