

## Product datasheet for **TA700325**

### Cytokeratin 20 (KRT20) Biotinylated Mouse Monoclonal Detection Antibody (Biotin conjugated) [Clone ID: OTI6D5]

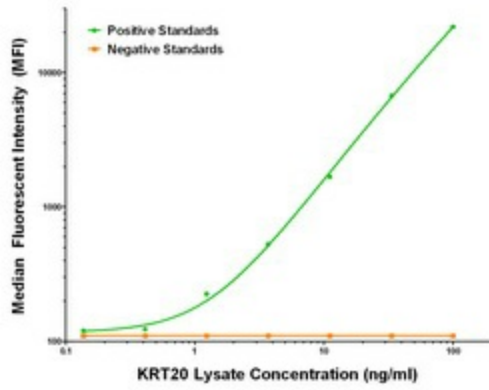
#### Product data:

Product Type:	Primary Antibodies
Clone Name:	OTI6D5
Applications:	LMNX
Recommended Dilution:	1:250 - 1:1000
Reactivity:	Human
Host:	Mouse
Isotype:	IgG1
Clonality:	Monoclonal
Immunogen:	Full length human recombinant protein of human KRT20 (NM_019010) produced in HEK293T cell.
Formulation:	Stored in PBS (pH 7.4) with 0.05% sodium azide, 10mg/ml BSA, 50% glycerol
Concentration:	0.5 mg/ml
Conjugation:	Biotin
Storage:	Store at -20°C as received.
Stability:	Stable for 12 months from date of receipt.
Gene Name:	keratin 20
Database Link:	<a href="#">NP_061883</a> <a href="#">Entrez Gene 54474 Human P35900</a>
Synonyms:	CD20; CK-20; CK20; K20; KRT21
Matched ELISA Pair:	TA600050



[View online »](#)

**Product images:**



KRT20 Luminex Elisa with Anti-Tag 1B12 Capture ([TA600050]) and 6D5 Detection (TA700325) Antibodies. Substrate used: Recombinant Human KRT20 ([LY402725])