

Product datasheet for **TA700323**

DEF6 Biotinylated Mouse Monoclonal Detection Antibody (Biotin conjugated) [Clone ID: OTI3C4]

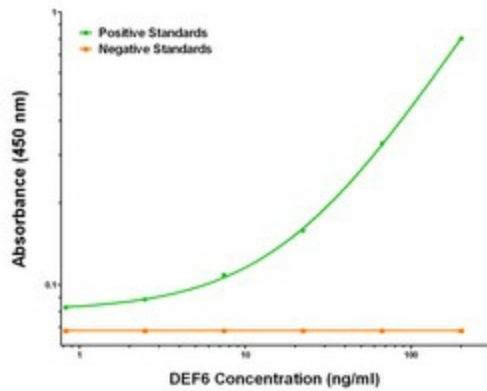
Product data:

Product Type:	Primary Antibodies
Clone Name:	OTI3C4
Applications:	ELISA, LMNX
Recommended Dilution:	1:250 - 1:1000
Reactivity:	Human, Mouse, Rat
Host:	Mouse
Isotype:	IgG1
Clonality:	Monoclonal
Immunogen:	Full length human recombinant protein of human DEF6 (NM_022047) produced in HEK293T cell.
Formulation:	Stored in PBS (pH 7.4) with 0.05% sodium azide, 10mg/ml BSA, 50% glycerol
Concentration:	0.5 mg/ml
Conjugation:	Biotin
Storage:	Store at -20°C as received.
Stability:	Stable for 12 months from date of receipt.
Gene Name:	DEF6 guanine nucleotide exchange factor
Database Link:	NP_071330 Entrez Gene 23853 MouseEntrez Gene 309642 RatEntrez Gene 50619 Human Q9H4E7
Synonyms:	IBP; SLAT; SWAP70L
Matched ELISA Pair:	TA600323
Protein Families:	Druggable Genome

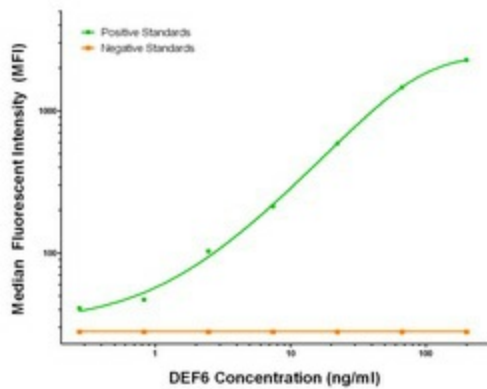


[View online »](#)

Product images:



DEF6 Elisa with 3B2 Capture ([TA600323]) and 3C4 Detection (TA700323) Antibodies. Substrate used: Recombinant Human DEF6 ([TP317877])



DEF6 Luminex Elisa with 3B2 Capture ([TA600323]) and 3C4 Detection (TA700323) Antibodies. Substrate used: Recombinant Human DEF6 ([TP317877])