

## Product datasheet for **TA700319**

### **Dystrobrevin alpha (DTNA) Biotinylated Mouse Monoclonal Detection Antibody (Biotin conjugated) [Clone ID: OTI1A2]**

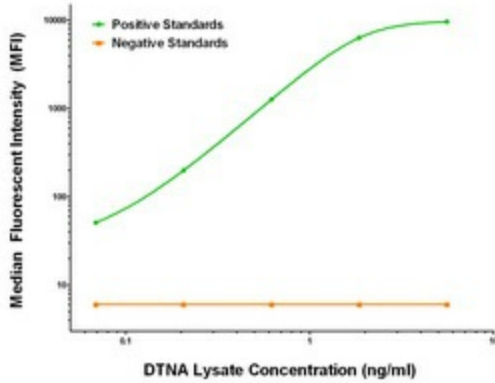
#### **Product data:**

Product Type:	Primary Antibodies
Clone Name:	OTI1A2
Applications:	LMNX
Recommended Dilution:	1:250 - 1:1000
Reactivity:	Human, Mouse, Rat
Host:	Mouse
Isotype:	IgG1
Clonality:	Monoclonal
Immunogen:	Full length human recombinant protein of human DTNA (NM_032980) produced in HEK293T cell.
Formulation:	Stored in PBS (pH 7.4) with 0.05% sodium azide, 10mg/ml BSA, 50% glycerol
Concentration:	0.5 mg/ml
Conjugation:	Biotin
Storage:	Store at -20°C as received.
Stability:	Stable for 12 months from date of receipt.
Gene Name:	dystrobrevin alpha
Database Link:	<a href="#">NP_116762</a> <a href="#">Entrez Gene 1837 Human</a> <a href="#">Q9Y4J8</a>
Synonyms:	D18S892E; DRP3; DTN; DTN-A; LVNC1
Matched ELISA Pair:	TA600319, TA600320, TA600321, TA600322
Protein Families:	Druggable Genome

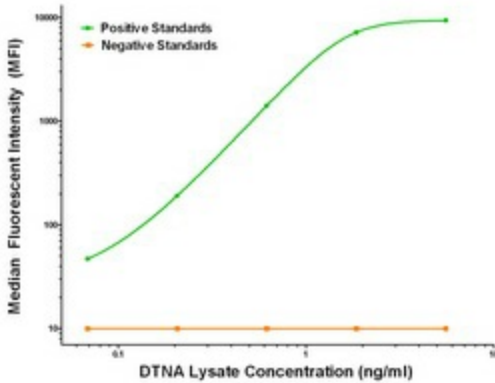


[View online »](#)

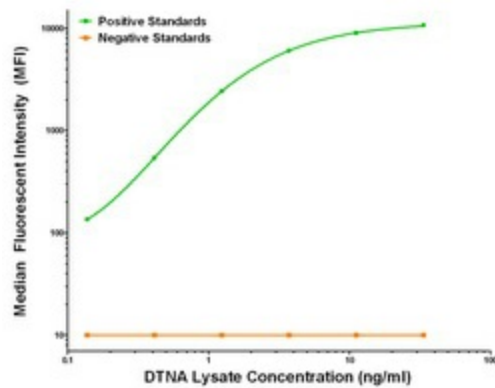
Product images:



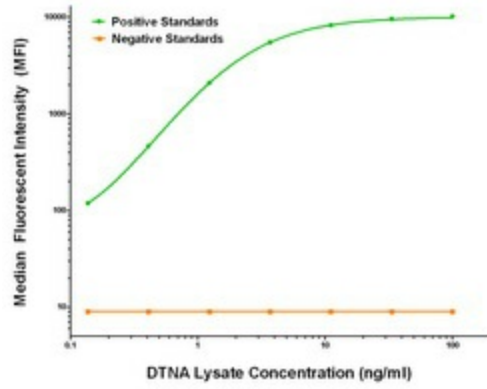
DTNA Luminex Elisa with 1B2 Capture ([TA600319]) and 1A2 Detection (TA700319) Antibodies. Substrate used: Recombinant Human DTNA ([LY409818])



DTNA Luminex Elisa with 1B1 Capture ([TA600320]) and 1A2 Detection (TA700319) Antibodies. Substrate used: Recombinant Human DTNA ([LY409818])



DTNA Luminex Elisa with 1C2 Capture ([TA600321]) and 1A2 Detection (TA700319) Antibodies. Substrate used: Recombinant Human DTNA ([LY409818])



DTNA Luminex Elisa with 2F9 Capture ([TA600322]) and 1A2 Detection (TA700319) Antibodies. Substrate used: Recombinant Human DTNA ([LY409818])