

Product datasheet for **TA700312**

MRPS27 Biotinylated Mouse Monoclonal Detection Antibody (Biotin conjugated) [Clone ID: OTI6E5]

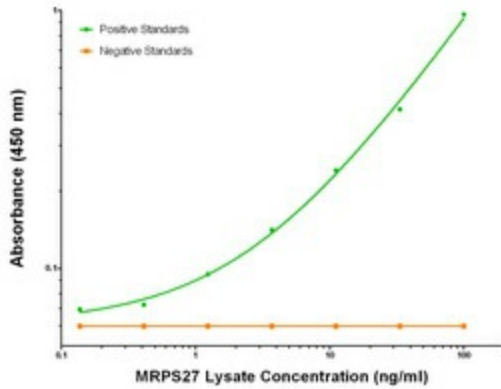
Product data:

Product Type:	Primary Antibodies
Clone Name:	OTI6E5
Applications:	ELISA, LMNX
Recommended Dilution:	1:250 - 1:1000
Reactivity:	Human
Host:	Mouse
Isotype:	IgG1
Clonality:	Monoclonal
Immunogen:	Full length human recombinant protein of human MRPS27 (NM_015084) produced in HEK293T cell.
Formulation:	Stored in PBS (pH 7.4) with 0.05% sodium azide, 10mg/ml BSA, 50% glycerol
Concentration:	0.5 mg/ml
Conjugation:	Biotin
Storage:	Store at -20°C as received.
Stability:	Stable for 12 months from date of receipt.
Gene Name:	mitochondrial ribosomal protein S27
Database Link:	NP_055899 Entrez Gene 23107 Human Q92552
Synonyms:	MRP-S27; S27mt
Matched ELISA Pair:	TA600311

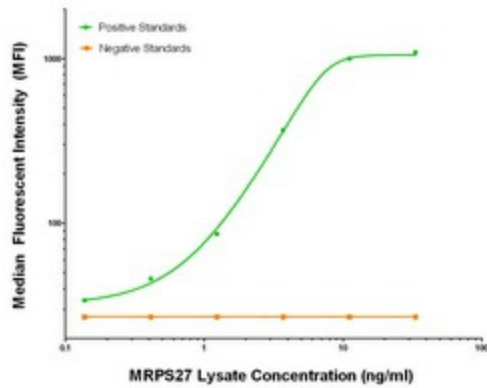


[View online »](#)

Product images:



MRPS27 ELISA with 3A8 Capture ([TA600311]) and 6E5 Detection (TA700312) Antibodies. Substrate used: Recombinant Human MRPS27 ([LY402416])



MRPS27 Luminex Elisa with 3A8 Capture ([TA600311]) and 6E5 Detection (TA700312) Antibodies. Substrate used: Recombinant Human MRPS27 ([LY402416])