

Product datasheet for **TA700310**

CDC2L1 (CDK11B) Biotinylated Mouse Monoclonal Detection Antibody (Biotin conjugated) **[Clone ID: OTI3E11]**

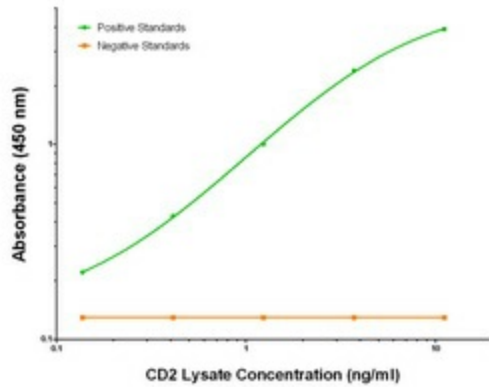
Product data:

Product Type:	Primary Antibodies
Clone Name:	OTI3E11
Applications:	ELISA, LMNX
Recommended Dilution:	1:250 - 1:1000
Reactivity:	Human
Host:	Mouse
Isotype:	IgG1
Clonality:	Monoclonal
Immunogen:	Full length human recombinant protein of human CD2 (NM_001767) produced in HEK293T cell.
Formulation:	Stored in PBS (pH 7.4) with 0.05% sodium azide, 10mg/ml BSA, 50% glycerol
Concentration:	0.5 mg/ml
Conjugation:	Biotin
Storage:	Store at -20°C as received.
Stability:	Stable for 12 months from date of receipt.
Gene Name:	cyclin dependent kinase 11B
Database Link:	NP_001778 Entrez Gene 984 Human P21127
Synonyms:	CDC2L1; CDK11; CDK11-p46; CDK11-p58; CDK11-p110; CLK-1; p58; p58CDC2L1; p58CLK-1; PITSLREA
Matched ELISA Pair:	TA600050
Protein Families:	Druggable Genome, Transcription Factors

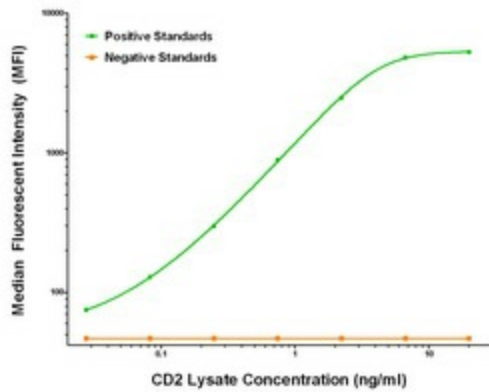


[View online »](#)

Product images:



CD2 Elisa with Anti-Tag 1B12 Capture ([TA600050]) and 3E11 Detection (TA700310) Antibodies. Substrate used: Recombinant Human CD2 ([LY400671])



CD2 Luminex Elisa with Anti-Tag 1B12 Capture ([TA600050]) and 3E11 Detection (TA700310) Antibodies. Substrate used: Recombinant Human CD2 ([LY400671])