

## Product datasheet for **TA700302**

### **CBX8 Biotinylated Mouse Monoclonal Detection Antibody (Biotin conjugated) [Clone ID: OTI2A5]**

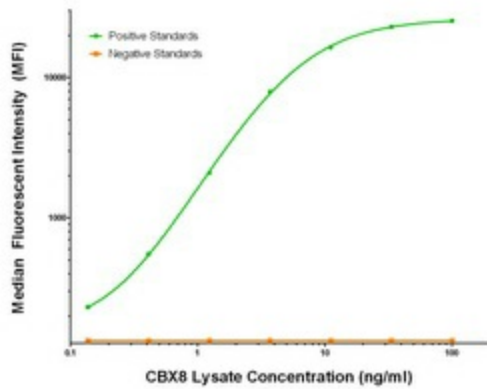
#### **Product data:**

Product Type:	Primary Antibodies
Clone Name:	OTI2A5
Applications:	ELISA
Recommended Dilution:	ELISA 1:250-1:1000
Reactivity:	Human, Mouse, Rat
Host:	Mouse
Isotype:	IgG1
Clonality:	Monoclonal
Immunogen:	Full length human recombinant protein of human CBX8 (NM_020649) produced in HEK293T cell.
Formulation:	Stored in PBS (pH 7.4) with 0.05% sodium azide, 10mg/ml BSA, 50% glycerol
Concentration:	0.5 mg/ml
Conjugation:	Biotin
Storage:	Store at -20°C as received.
Stability:	Stable for 12 months from date of receipt.
Gene Name:	chromobox 8
Database Link:	<a href="#">NP_065700</a> <a href="#">Entrez Gene 30951 MouseEntrez Gene 303731 RatEntrez Gene 57332 Human Q9HC52</a>
Synonyms:	PC3; RC1
Matched ELISA Pair:	TA600302, TA600304, TA600305
Protein Families:	Transcription Factors

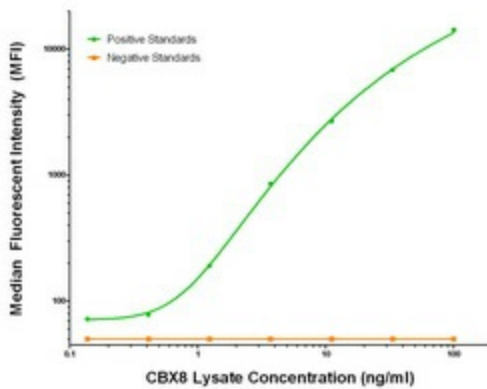


[View online »](#)

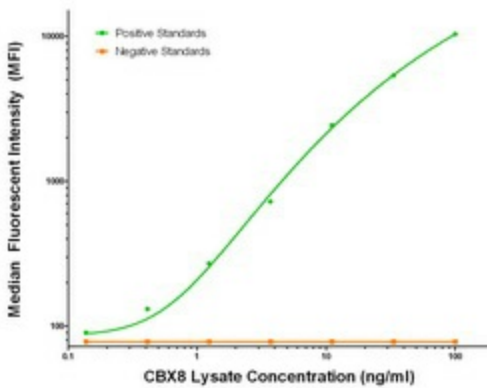
**Product images:**



CBX8 Luminex Elisa with 1C7 Capture ([TA600302]) and 2A5 Detection (TA700302) Antibodies. Substrate used: Recombinant Human CBX8 ([LY412158])



CBX8 Luminex Elisa with 2C8 Capture ([TA600304]) and 2A5 Detection (TA700302) Antibodies. Substrate used: Recombinant Human CBX8 ([LY412158])



CBX8 Luminex Elisa with 5F3 Capture ([TA600305]) and 2A5 Detection (TA700302) Antibodies. Substrate used: Recombinant Human CBX8 ([LY412158])