

Product datasheet for **TA700288**

Dystrobrevin beta (DTNB) Biotinylated Mouse Monoclonal Detection Antibody (Biotin conjugated) [Clone ID: OTI3C11]

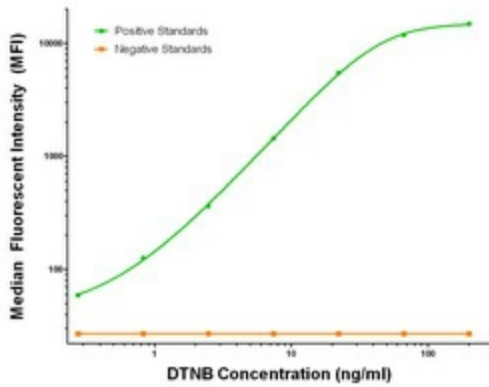
Product data:

Product Type:	Primary Antibodies
Clone Name:	OTI3C11
Applications:	LMNX
Recommended Dilution:	1:250 - 1:1000
Reactivity:	Human, Mouse, Rat
Host:	Mouse
Isotype:	IgG1
Clonality:	Monoclonal
Immunogen:	Full length human recombinant protein of human DTNB (NM_183361) produced in HEK293T cell.
Formulation:	Stored in PBS (pH 7.4) with 0.05% sodium azide, 10mg/ml BSA, 50% glycerol
Concentration:	0.5 mg/ml
Conjugation:	Biotin
Storage:	Store at -20°C as received.
Stability:	Stable for 12 months from date of receipt.
Gene Name:	dystrobrevin beta
Database Link:	NP_899205 Entrez Gene 13528 MouseEntrez Gene 362715 RatEntrez Gene 1838 Human O60941
Synonyms:	MGC17163; MGC57126
Matched ELISA Pair:	TA600288, TA600289

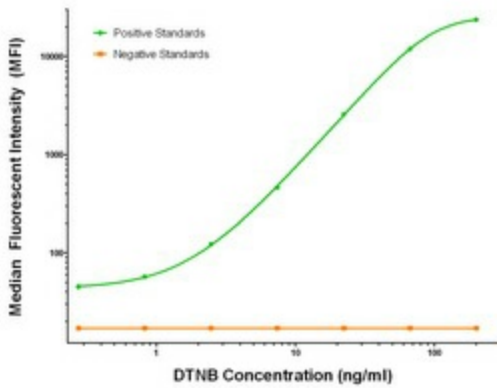


[View online »](#)

Product images:



DTNB Luminex Elisa with 2E4 Capture ([TA600288]) and 3C11 Detection (TA700288) Antibodies. Substrate used: Recombinant Human DTNB ([TP303798])



DTNB Luminex Elisa with 3H8 Capture ([TA600289]) and 3C11 Detection (TA700288) Antibodies. Substrate used: Recombinant Human DTNB ([TP303798])