

## Product datasheet for **TA700286**

### CD22 Biotinylated Mouse Monoclonal Detection Antibody (Biotin conjugated) [Clone ID: OTI2D3]

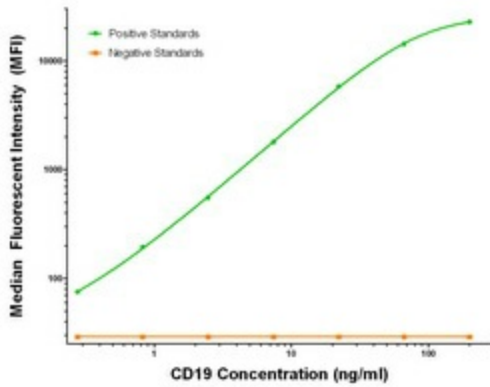
#### Product data:

Product Type:	Primary Antibodies
Clone Name:	OTI2D3
Applications:	LMNX
Recommended Dilution:	1:250 - 1:1000
Reactivity:	Human
Host:	Mouse
Isotype:	IgG1
Clonality:	Monoclonal
Immunogen:	Full length human recombinant protein of human CD19 (NM_001770) produced in HEK293T cell.
Formulation:	Stored in PBS (pH 7.4) with 0.05% sodium azide, 10mg/ml BSA, 50% glycerol
Concentration:	0.5 mg/ml
Conjugation:	Biotin
Storage:	Store at -20°C as received.
Stability:	Stable for 12 months from date of receipt.
Gene Name:	CD22 molecule
Database Link:	<a href="#">NP_001762</a> <a href="#">Entrez Gene 933 Human P20273</a>
Synonyms:	SIGLEC-2; SIGLEC2
Matched ELISA Pair:	TA600283, TA600284
Protein Families:	Druggable Genome, Transmembrane
Protein Pathways:	B cell receptor signaling pathway, Cell adhesion molecules (CAMs), Hematopoietic cell lineage

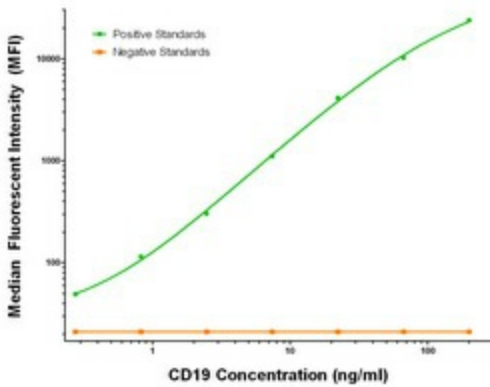


[View online »](#)

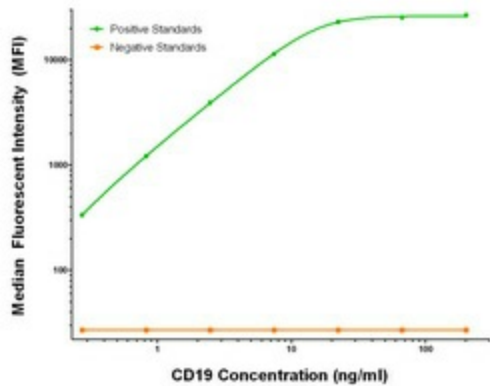
**Product images:**



CD19 Luminex Elisa with 3G7 Capture ([TA600283]) and 2D3 Detection (TA700286) Antibodies. Substrate used: Recombinant Human CD19 ([TP302922])



CD19 Luminex Elisa with 2F6 Capture ([TA600284]) and 2D3 Detection (TA700286) Antibodies. Substrate used: Recombinant Human CD19 ([TP302922])



CD19 Luminex Elisa with 1E9 Capture ([TA600285]) and 2D3 Detection (TA700286) Antibodies. Substrate used: Recombinant Human CD19 ([TP302922])