

## Product datasheet for **TA700279**

### CD4 Biotinylated Mouse Monoclonal Detection Antibody (Biotin conjugated) [Clone ID: OTI4A9]

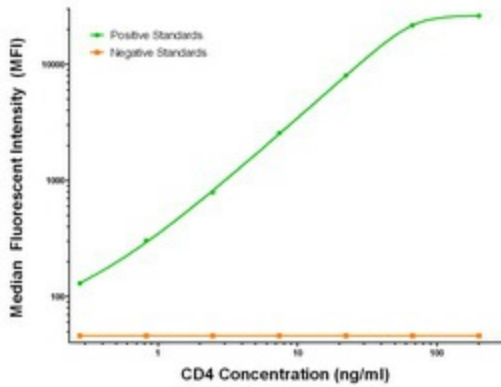
#### Product data:

Product Type:	Primary Antibodies
Clone Name:	OTI4A9
Applications:	LMNX
Recommended Dilution:	1:250 - 1:1000
Reactivity:	Human
Host:	Mouse
Isotype:	IgG1
Clonality:	Monoclonal
Immunogen:	Full length human recombinant protein of human CD4 (NM_000616) produced in HEK293T cell.
Formulation:	Stored in PBS (pH 7.4) with 0.05% sodium azide, 10mg/ml BSA, 50% glycerol
Concentration:	0.5 mg/ml
Conjugation:	Biotin
Storage:	Store at -20°C as received.
Stability:	Stable for 12 months from date of receipt.
Gene Name:	CD4 molecule
Database Link:	<a href="#">NP_000607</a> <a href="#">Entrez Gene 920 Human P01730</a>
Synonyms:	CD4mut; IMD79; OKT4D
Matched ELISA Pair:	TA600278, TA600280
Protein Families:	Adult stem cells, Druggable Genome, ES Cell Differentiation/IPS, Induced pluripotent stem cells, Transmembrane
Protein Pathways:	Antigen processing and presentation, Cell adhesion molecules (CAMs), Hematopoietic cell lineage, Primary immunodeficiency, T cell receptor signaling pathway

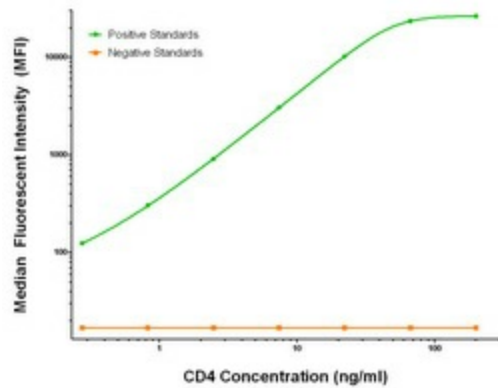


[View online »](#)

Product images:



CD4 Luminex Elisa with 7F2 Capture ([TA600278]) and 4A9 Detection (TA700279) Antibodies. Substrate used: Recombinant Human CD4 ([TP306453])



CD4 Luminex Elisa with 8H3 Capture ([TA600280]) and 4A9 Detection (TA700279) Antibodies. Substrate used: Recombinant Human CD4 ([TP306453])