

Product datasheet for **TA700274**

DPP3 Biotinylated Mouse Monoclonal Detection Antibody (Biotin conjugated) [Clone ID: OTI2B12]

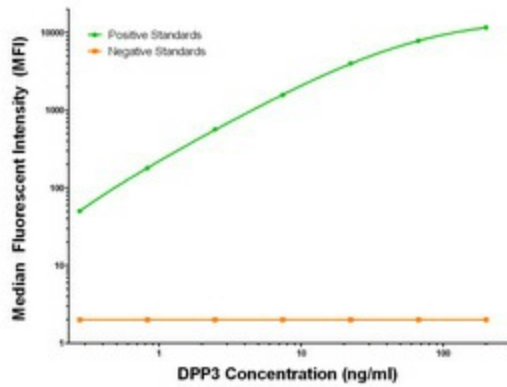
Product data:

Product Type:	Primary Antibodies
Clone Name:	OTI2B12
Applications:	LMNX
Recommended Dilution:	1:250 - 1:1000
Reactivity:	Human, Mouse, Rat
Host:	Mouse
Isotype:	IgG1
Clonality:	Monoclonal
Immunogen:	Full length human recombinant protein of human DPP3 (NM_005700) produced in HEK293T cell.
Formulation:	Stored in PBS (pH 7.4) with 0.05% sodium azide, 10mg/ml BSA, 50% glycerol
Concentration:	0.5 mg/ml
Conjugation:	Biotin
Storage:	Store at -20°C as received.
Stability:	Stable for 12 months from date of receipt.
Gene Name:	dipeptidyl peptidase 3
Database Link:	NP_005691 Entrez Gene 75221 Mouse Entrez Gene 10072 Human Q9NY33
Synonyms:	DPPIII
Matched ELISA Pair:	TA600273
Protein Families:	Druggable Genome, Protease

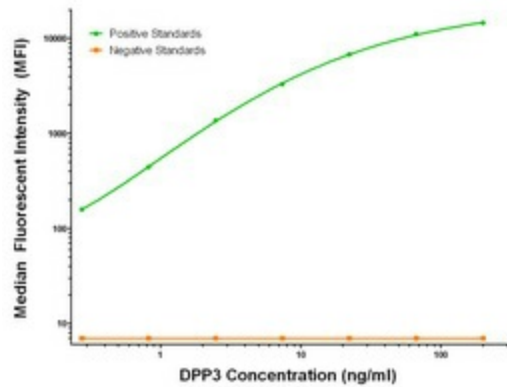


[View online »](#)

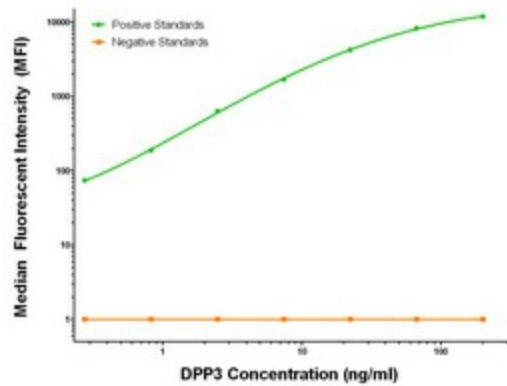
Product images:



DPP3 Luminex Elisa with 2A12 Capture ([TA600273]) and 2B12 Detection (TA700274) Antibodies. Substrate used: Recombinant Human DPP3 ([TP319658])



DPP3 Luminex Elisa with 2A8 Capture ([TA600275]) and 2B12 Detection (TA700274) Antibodies. Substrate used: Recombinant Human DPP3 ([TP319658])



DPP3 Luminex Elisa with 2G8 Capture ([TA600276]) and 2B12 Detection (TA700274) Antibodies. Substrate used: Recombinant Human DPP3 ([TP319658])