

Product datasheet for **TA700273**

DPP3 Biotinylated Mouse Monoclonal Detection Antibody (Biotin conjugated) [Clone ID: OTI2D9]

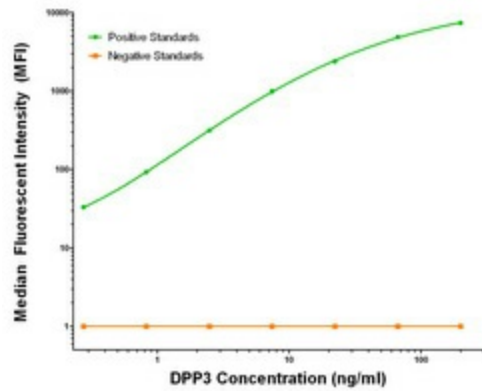
Product data:

| | |
|-----------------------|--|
| Product Type: | Primary Antibodies |
| Clone Name: | OTI2D9 |
| Applications: | LMNX |
| Recommended Dilution: | 1:250 - 1:1000 |
| Reactivity: | Human, Mouse, Rat |
| Host: | Mouse |
| Isotype: | IgG1 |
| Clonality: | Monoclonal |
| Immunogen: | Full length human recombinant protein of human DPP3 (NM_005700) produced in HEK293T cell. |
| Formulation: | Stored in PBS (pH 7.4) with 0.05% sodium azide, 10mg/ml BSA, 50% glycerol |
| Concentration: | 0.5 mg/ml |
| Conjugation: | Biotin |
| Storage: | Store at -20°C as received. |
| Stability: | Stable for 12 months from date of receipt. |
| Gene Name: | dipeptidyl peptidase 3 |
| Database Link: | NP_005691 Entrez Gene 75221 Mouse Entrez Gene 10072 Human Q9NY33 |
| Synonyms: | DPPIII |
| Matched ELISA Pair: | TA600273, TA600274, TA600275, TA600276 |
| Protein Families: | Druggable Genome, Protease |

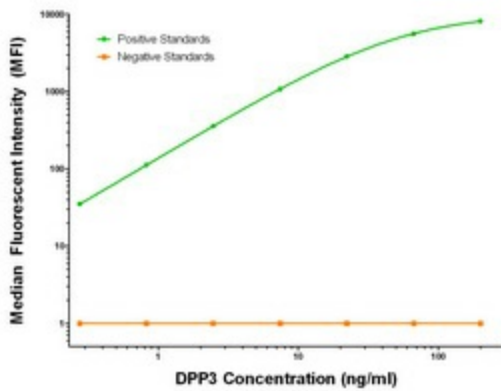


[View online »](#)

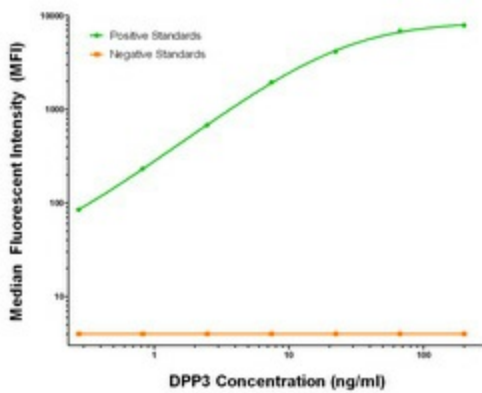
Product images:



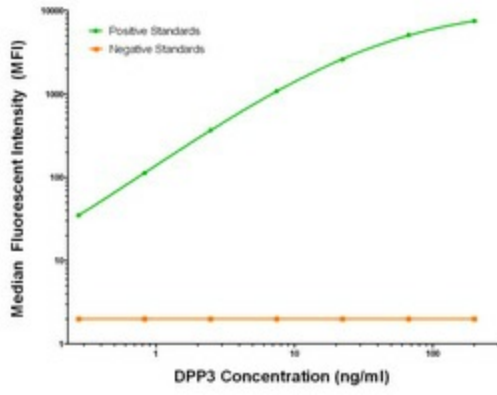
DPP3 Luminex Elisa with 2A12 Capture ([TA600273]) and 2D9 Detection (TA700273) Antibodies. Substrate used: Recombinant Human DPP3 ([TP319658])



DPP3 Luminex Elisa with 2B12 Capture ([TA600274]) and 2D9 Detection (TA700273) Antibodies. Substrate used: Recombinant Human DPP3 ([TP319658])



DPP3 Luminex Elisa with 2A8 Capture ([TA600275]) and 2D9 Detection (TA700273) Antibodies. Substrate used: Recombinant Human DPP3 ([TP319658])



DPP3 Luminex Elisa with 2G8 Capture ([TA600276]) and 2D9 Detection (TA700273) Antibodies. Substrate used: Recombinant Human DPP3 ([TP319658])