

Product datasheet for **TA700266**

PCDH7 Biotinylated Mouse Monoclonal Detection Antibody (Biotin conjugated) [Clone ID: OTI3C8]

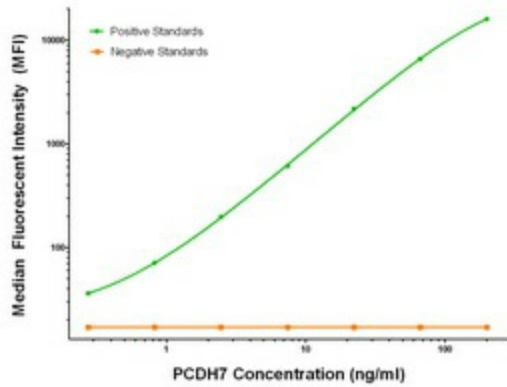
Product data:

| | |
|-----------------------|---|
| Product Type: | Primary Antibodies |
| Clone Name: | OTI3C8 |
| Applications: | LMNX |
| Recommended Dilution: | 1:250 - 1:1000 |
| Reactivity: | Human, Mouse, Rat |
| Host: | Mouse |
| Isotype: | IgG1 |
| Clonality: | Monoclonal |
| Immunogen: | Full length human recombinant protein of human PCDH7 (NM_032457) produced in HEK293T cell. |
| Formulation: | Stored in PBS (pH 7.4) with 0.05% sodium azide, 10mg/ml BSA, 50% glycerol |
| Concentration: | 0.5 mg/ml |
| Conjugation: | Biotin |
| Storage: | Store at -20°C as received. |
| Stability: | Stable for 12 months from date of receipt. |
| Gene Name: | protocadherin 7 |
| Database Link: | NP_115833 Entrez Gene 54216 Mouse Entrez Gene 5099 Human O60245 |
| Synonyms: | BH-Pcdh; BHPCDH; PPP1R120 |
| Matched ELISA Pair: | TA600265 |
| Protein Families: | Druggable Genome, Transmembrane |

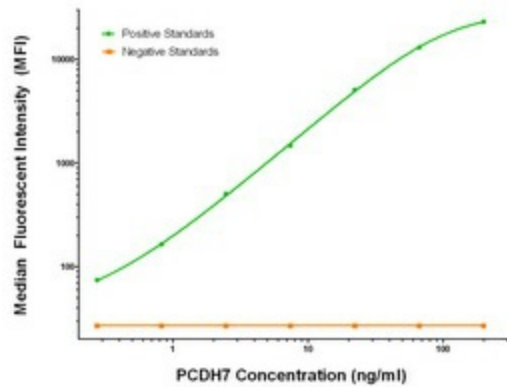


[View online »](#)

Product images:



PCDH7 Luminex Elisa with 1F7 Capture ([TA600265]) and 3C8 Detection (TA700266) Antibodies. Substrate used: Recombinant Human PCDH7 ([TP323033])



PCDH7 Luminex Elisa with 1F9 Capture ([TA600267]) and 3C8 Detection (TA700266) Antibodies. Substrate used: Recombinant Human PCDH7 ([TP323033])