

Product datasheet for **TA700265**

PCDH7 Biotinylated Mouse Monoclonal Detection Antibody (Biotin conjugated) [Clone ID: OTI2G6]

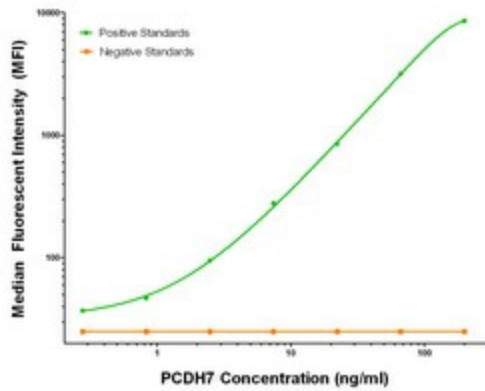
Product data:

Product Type:	Primary Antibodies
Clone Name:	OTI2G6
Applications:	LMNX
Recommended Dilution:	1:250 - 1:1000
Reactivity:	Human, Mouse, Rat
Host:	Mouse
Isotype:	IgG1
Clonality:	Monoclonal
Immunogen:	Full length human recombinant protein of human PCDH7 (NM_032457) produced in HEK293T cell.
Formulation:	Stored in PBS (pH 7.4) with 0.05% sodium azide, 10mg/ml BSA, 50% glycerol
Concentration:	0.5 mg/ml
Conjugation:	Biotin
Storage:	Store at -20°C as received.
Stability:	Stable for 12 months from date of receipt.
Gene Name:	protocadherin 7
Database Link:	NP_115833 Entrez Gene 54216 Mouse Entrez Gene 5099 Human O60245
Synonyms:	BH-Pcdh; BHPCDH; PPP1R120
Matched ELISA Pair:	TA600265, TA600266, TA600267
Protein Families:	Druggable Genome, Transmembrane

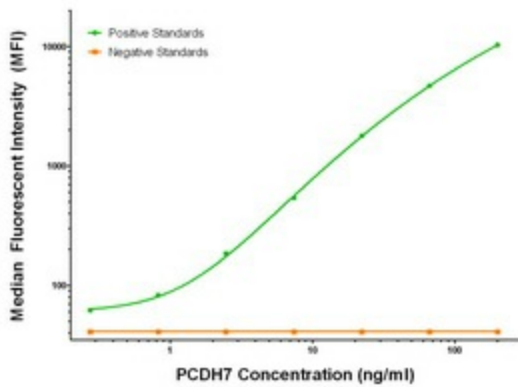


[View online »](#)

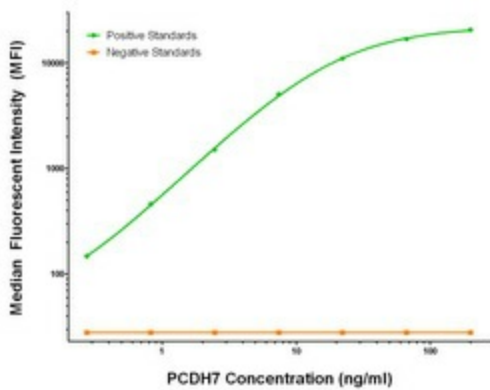
Product images:



PCDH7 Luminex Elisa with 1F7 Capture ([TA600265]) and 2G6 Detection (TA700265) Antibodies. Substrate used: Recombinant Human PCDH7 ([TP323033])



PCDH7 Luminex Elisa with 1F9 Capture ([TA600267]) and 2G6 Detection (TA700265) Antibodies. Substrate used: Recombinant Human PCDH7 ([TP323033])



PCDH7 Luminex Elisa with 3C8 Capture ([TA600266]) and 2G6 Detection (TA700265) Antibodies. Substrate used: Recombinant Human PCDH7 ([TP323033])