

## Product datasheet for **TA700257**

### Amyloid Precursor Protein (APP) Biotinylated Mouse Monoclonal Detection Antibody (Biotin conjugated) [Clone ID: OTI4C9]

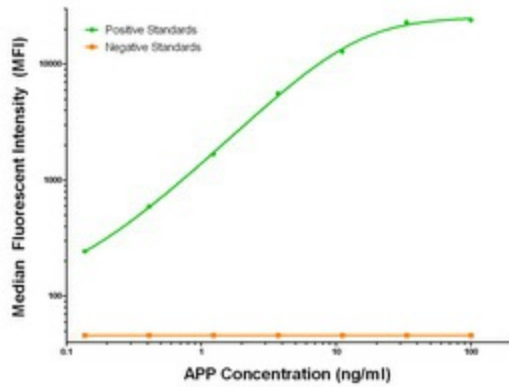
#### Product data:

Product Type:	Primary Antibodies
Clone Name:	OTI4C9
Applications:	LMNX
Recommended Dilution:	1:250 - 1:1000
Reactivity:	Human, Mouse, Rat
Host:	Mouse
Isotype:	IgG1
Clonality:	Monoclonal
Immunogen:	Full length human recombinant protein of human APP (NM_201413) produced in HEK293T cell.
Formulation:	Stored in PBS (pH 7.4) with 0.05% sodium azide, 10mg/ml BSA, 50% glycerol
Concentration:	0.5 mg/ml
Conjugation:	Biotin
Storage:	Store at -20°C as received.
Stability:	Stable for 12 months from date of receipt.
Gene Name:	amyloid beta precursor protein
Database Link:	<a href="#">NP_958816</a> <a href="#">Entrez Gene 11820 MouseEntrez Gene 54226 RatEntrez Gene 351 Human P05067</a>
Synonyms:	AAA; ABETA; ABPP; AD1; APPI; CTFgamma; CVAP; PN-II; PN2
Matched ELISA Pair:	TA600050
Protein Families:	Druggable Genome, Transmembrane
Protein Pathways:	Alzheimer's disease



[View online »](#)

**Product images:**



APP Luminex Elisa with Anti-Tag 1B12 Capture ([TA600050]) and 4C9 Detection (TA700257) Antibodies. Substrate used: Recombinant Human APP ([TP309575])