

## Product datasheet for **TA700253**

### **Cystatin C (CST3) Biotinylated Mouse Monoclonal Detection Antibody (Biotin conjugated) [Clone ID: OTI1A6]**

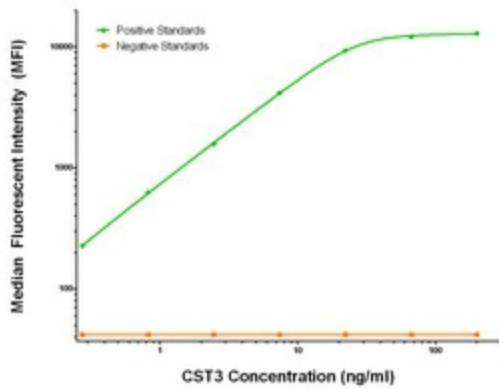
#### **Product data:**

Product Type:	Primary Antibodies
Clone Name:	OTI1A6
Applications:	LMNX
Recommended Dilution:	1:250 - 1:1000
Reactivity:	Human
Host:	Mouse
Isotype:	IgG1
Clonality:	Monoclonal
Immunogen:	Full length human recombinant protein of human CST3 (NM_000099) produced in HEK293T cell.
Formulation:	Stored in PBS (pH 7.4) with 0.05% sodium azide, 10mg/ml BSA, 50% glycerol
Concentration:	0.5 mg/ml
Conjugation:	Biotin
Storage:	Store at -20°C as received.
Stability:	Stable for 12 months from date of receipt.
Gene Name:	cystatin C
Database Link:	<a href="#">NP_000090</a> <a href="#">Entrez Gene 1471 Human P01034</a>
Synonyms:	ARMD11; HEL-S-2
Matched ELISA Pair:	TA600050
Protein Families:	Druggable Genome, ES Cell Differentiation/IPS, Transmembrane



[View online »](#)

### Product images:



CST3 Luminex Elisa with Anti-Tag 1B12 Capture ([TA600050]) and 1A6 Detection (TA700253) Antibodies. Substrate used: Recombinant Human CST3 ([TP310730])