

Product datasheet for **TA700236**

TIMP2 Biotinylated Mouse Monoclonal Detection Antibody (Biotin conjugated) [Clone ID: OTI3H8]

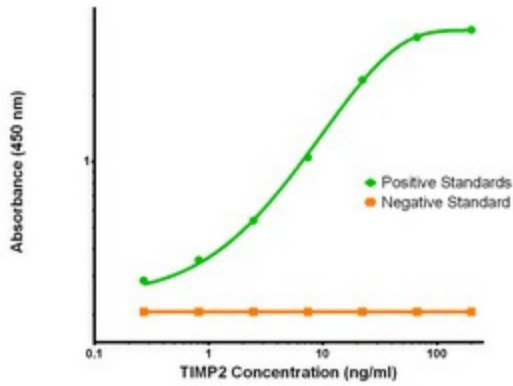
Product data:

| | |
|-----------------------|---|
| Product Type: | Primary Antibodies |
| Clone Name: | OTI3H8 |
| Applications: | ELISA, LMNX |
| Recommended Dilution: | 1:250 - 1:1000 |
| Reactivity: | Human, Mouse, Rat |
| Host: | Mouse |
| Isotype: | IgG1 |
| Clonality: | Monoclonal |
| Immunogen: | Full length human recombinant protein of human TIMP2(NP_003246) produced in HEK293T cell. |
| Formulation: | Stored in PBS (pH 7.4) with 0.05% sodium azide, 10mg/ml BSA, 50% glycerol |
| Concentration: | 0.5 mg/ml |
| Conjugation: | Biotin |
| Storage: | Store at -20°C as received. |
| Stability: | Stable for 12 months from date of receipt. |
| Gene Name: | TIMP metalloproteinase inhibitor 2 |
| Database Link: | NP_003246 Entrez Gene 21858 Mouse Entrez Gene 29543 Rat Entrez Gene 7077 Human P16035 |
| Synonyms: | CSC-21K; DDC8 |
| Matched ELISA Pair: | TA600235 |
| Protein Families: | Druggable Genome, Secreted Protein |

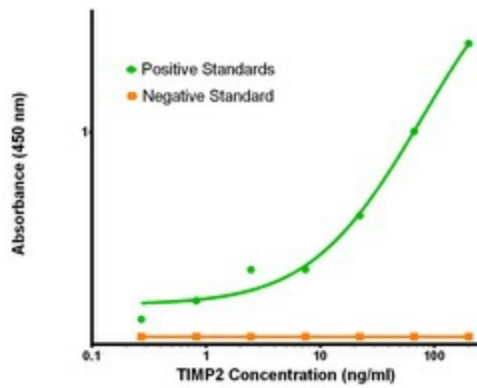


[View online »](#)

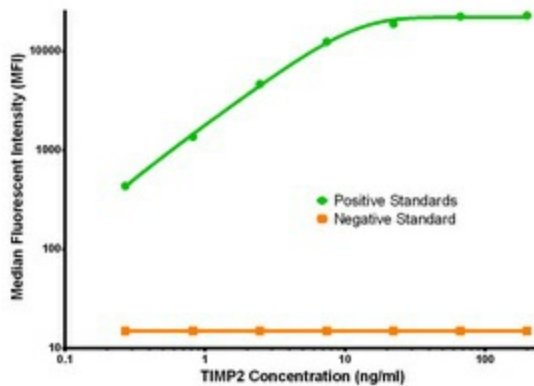
Product images:



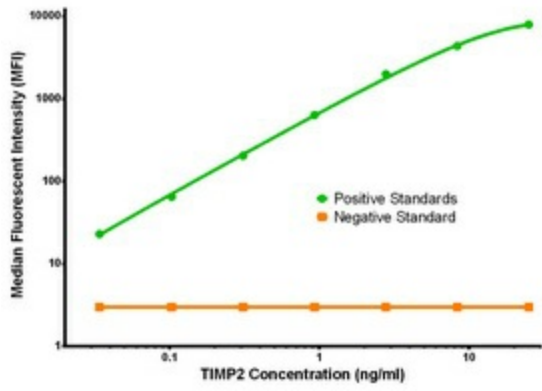
TIMP2 Elisa with 1A6 Capture ([TA600235]) and 1B11 Detection ([TA700237]) Antibodies. Substrate used: Recombinant Human TIMP2 ([TP309796])



TIMP2 Elisa with 1A6 Capture ([TA600235]) and 3G7 Detection ([TA700238]) Antibodies. Substrate used: Recombinant Human TIMP2 ([TP309796])



TIMP2 Luminex Elisa with 1A6 Capture ([TA600235]) and 3H8 Detection (TA700236) Antibodies. Substrate used: Recombinant Human TIMP2 ([TP309796])



TIMP2 Luminex Elisa with 3G7 Capture ([TA600238]) and 3H8 Detection (TA700236) Antibodies. Substrate used: Recombinant Human TIMP2 ([TP309796])