

Product datasheet for **TA700235**

TIMP2 Biotinylated Mouse Monoclonal Detection Antibody (Biotin conjugated) [Clone ID: OTI2G7]

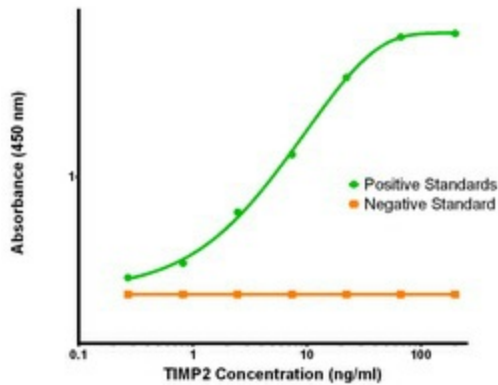
Product data:

Product Type:	Primary Antibodies
Clone Name:	OTI2G7
Applications:	ELISA, LMNX
Recommended Dilution:	1:250 - 1:1000
Reactivity:	Human, Mouse, Rat
Host:	Mouse
Isotype:	IgG1
Clonality:	Monoclonal
Immunogen:	Full length human recombinant protein of human TIMP2(NP_003246) produced inHEK293T cell.
Formulation:	Stored in PBS (pH 7.4) with 0.05% sodium azide, 10mg/ml BSA, 50% glycerol
Concentration:	0.5 mg/ml
Conjugation:	Biotin
Storage:	Store at -20°C as received.
Stability:	Stable for 12 months from date of receipt.
Gene Name:	TIMP metalloproteinase inhibitor 2
Database Link:	NP_003246 Entrez Gene 21858 MouseEntrez Gene 29543 RatEntrez Gene 7077 Human P16035
Synonyms:	CSC-21K; DDC8
Matched ELISA Pair:	TA600235, TA600236, TA600237, TA600238
Protein Families:	Druggable Genome, Secreted Protein

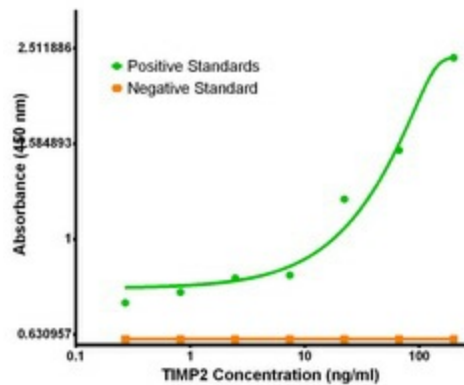


[View online »](#)

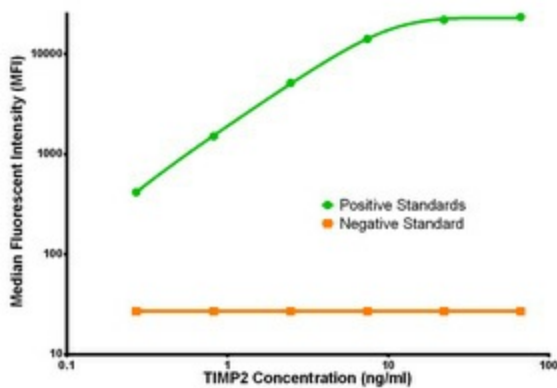
Product images:



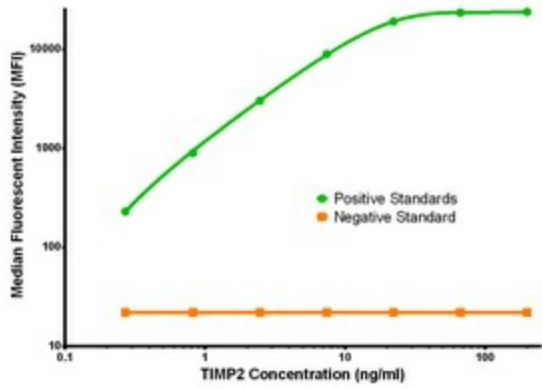
TIMP2 Elisa with 1A6 Capture ([TA600235]) and 2G7 Detection (TA700235) Antibodies. Substrate used: Recombinant Human TIMP2 ([TP309796])



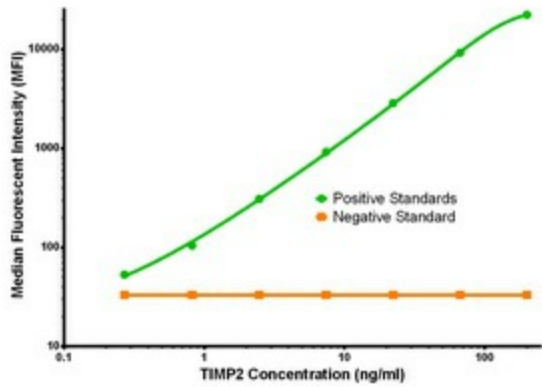
TIMP2 Elisa with 1A6 Capture ([TA600235]) and 3H8 Detection ([TA700236]) Antibodies. Substrate used: Recombinant Human TIMP2 ([TP309796])



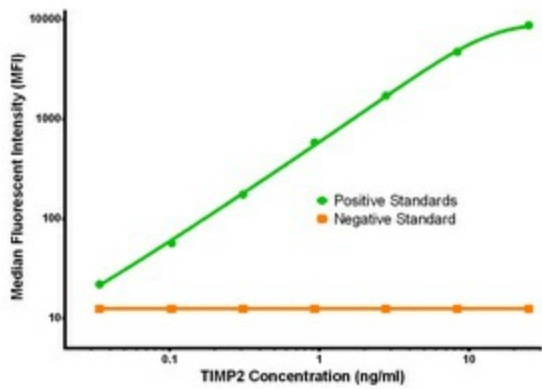
TIMP2 Luminex Elisa with 1A6 Capture ([TA600235]) and 2G7 Detection (TA700235) Antibodies. Substrate used: Recombinant Human TIMP2 ([TP309796])



TIMP2 Luminex Elisa with 3H8 Capture ([TA600236]) and 2G7 Detection (TA700235) Antibodies. Substrate used: Recombinant Human TIMP2 ([TP309796])



TIMP2 Luminex Elisa with 1D7 Capture ([TA600237]) and 2G7 Detection (TA700235) Antibodies. Substrate used: Recombinant Human TIMP2 ([TP309796])



TIMP2 Luminex Elisa with 3G7 Capture ([TA600238]) and 2G7 Detection (TA700235) Antibodies. Substrate used: Recombinant Human TIMP2 ([TP309796])