

## Product datasheet for **TA700231**

### **TBXAS1 Biotinylated Mouse Monoclonal Detection Antibody (Biotin conjugated) [Clone ID: OTI1B8]**

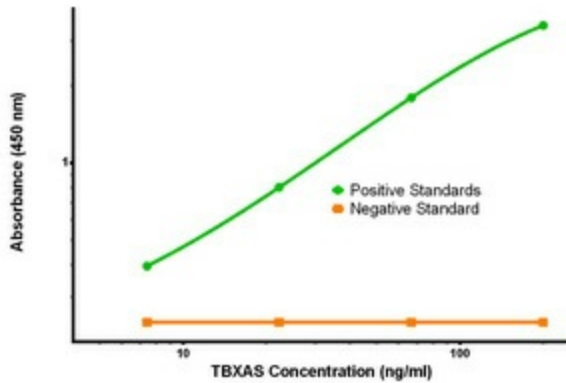
#### Product data:

Product Type:	Primary Antibodies
Clone Name:	OTI1B8
Applications:	ELISA, LMNX
Recommended Dilution:	1:250 - 1:1000
Reactivity:	Human
Host:	Mouse
Isotype:	IgG1
Clonality:	Monoclonal
Immunogen:	Full length human recombinant protein of human TBXAS1 (NP_001052) produced in HEK293T cell.
Formulation:	Stored in PBS (pH 7.4) with 0.05% sodium azide, 10mg/ml BSA, 50% glycerol
Concentration:	0.5 mg/ml
Conjugation:	Biotin
Storage:	Store at -20°C as received.
Stability:	Stable for 12 months from date of receipt.
Gene Name:	thromboxane A synthase 1
Database Link:	<a href="#">NP_001052</a> <a href="#">Entrez Gene 6916 Human P24557</a>
Synonyms:	BDPLT14; CYP5; CYP5A1; GHOSAL; THAS; TS; TXAS; TXS
Matched ELISA Pair:	TA600230
Protein Families:	Druggable Genome, P450
Protein Pathways:	Arachidonic acid metabolism, Metabolic pathways

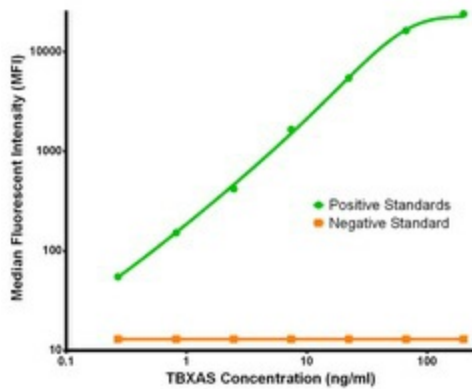


[View online »](#)

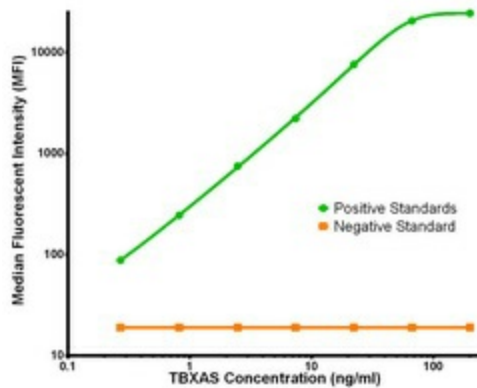
**Product images:**



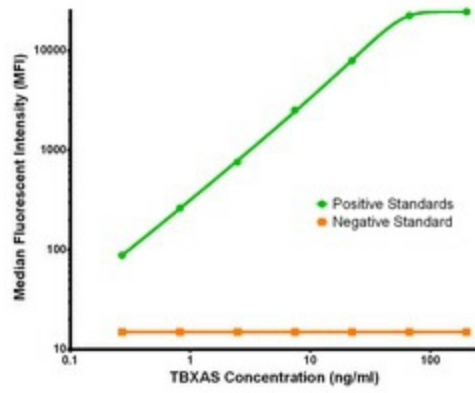
TBXAS Elisa with 1A12 Capture ([TA600232]) and 1B8 Detection (TA700231) Antibodies. Substrate used: Recombinant Human TBXAS ([TP308028])



TBXAS Luminex Elisa with 1H9 Capture ([TA600230]) and 1B8 Detection (TA700231) Antibodies. Substrate used: Recombinant Human TBXAS ([TP308028])



TBXAS Luminex Elisa with 1A12 Capture ([TA600232]) and 1B8 Detection (TA700231) Antibodies. Substrate used: Recombinant Human TBXAS ([TP308028])



TBXAS Luminex Elisa with 1H1 Capture ([TA600234]) and 1B8 Detection (TA700231) Antibodies. Substrate used: Recombinant Human TBXAS ([TP308028])