

Product datasheet for **TA700224**

p21 Ras (HRAS) Biotinylated Mouse Monoclonal Detection Antibody (Biotin conjugated) **[Clone ID: OTI1A1]**

Product data:

Product Type:	Primary Antibodies
Clone Name:	OTI1A1
Applications:	LMNX
Recommended Dilution:	1:250 - 1:1000
Reactivity:	Human, Mouse, Rat
Host:	Mouse
Isotype:	IgG1
Clonality:	Monoclonal
Immunogen:	Full length human recombinant protein of human HRAS (NM_005343) produced in HEK293T cell.
Formulation:	Stored in PBS (pH 7.4) with 0.05% sodium azide, 10mg/ml BSA, 50% glycerol
Concentration:	0.5 mg/ml
Conjugation:	Biotin
Storage:	Store at -20°C as received.
Stability:	Stable for 12 months from date of receipt.
Gene Name:	HRas proto-oncogene, GTPase
Database Link:	NP_005334 Entrez Gene 15461 MouseEntrez Gene 293621 RatEntrez Gene 3265 Human P01112
Synonyms:	C-BAS/HAS; C-H-RAS; C-HA-RAS1; CTLO; H-RASIDX; HAMSIV; HRAS1; p21ras; RASH1
Matched ELISA Pair:	TA600224
Protein Families:	Druggable Genome

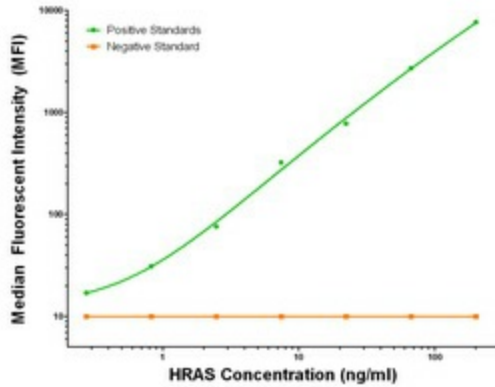


[View online »](#)

Protein Pathways:

Acute myeloid leukemia, Axon guidance, B cell receptor signaling pathway, Bladder cancer, Chemokine signaling pathway, Chronic myeloid leukemia, Endocytosis, Endometrial cancer, ErbB signaling pathway, Fc epsilon RI signaling pathway, Focal adhesion, Gap junction, Glioma, GnRH signaling pathway, Insulin signaling pathway, Long-term depression, Long-term potentiation, MAPK signaling pathway, Melanogenesis, Melanoma, Natural killer cell mediated cytotoxicity, Neurotrophin signaling pathway, Non-small cell lung cancer, Pathways in cancer, Prostate cancer, Regulation of actin cytoskeleton, Renal cell carcinoma, T cell receptor signaling pathway, Thyroid cancer, Tight junction, VEGF signaling pathway

Product images:



HRAS Luminex Elisa with 1G8 Capture ([TA600224]) and 1A1 Detection (TA700224) Antibodies. Substrate used: Recombinant Human HRAS ([TP316409])