

Product datasheet for **TA700223**

CD117 Biotinylated Mouse Monoclonal Detection Antibody (Biotin conjugated) [Clone ID: OTI3F9]

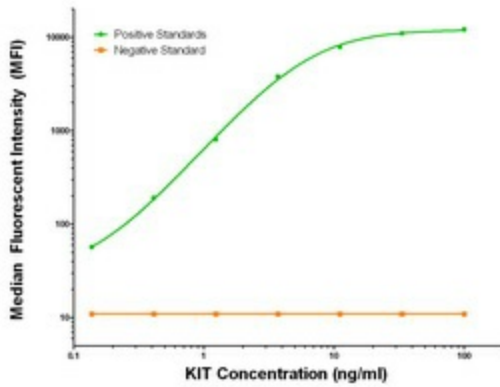
Product data:

Product Type:	Primary Antibodies
Clone Name:	OTI3F9
Applications:	LMNX
Recommended Dilution:	1:250 - 1:1000
Reactivity:	Human
Host:	Mouse
Isotype:	IgG1
Clonality:	Monoclonal
Immunogen:	Full length human recombinant protein of human KIT (NM_000222) produced in HEK293T cell.
Formulation:	Stored in PBS (pH 7.4) with 0.05% sodium azide, 10mg/ml BSA, 50% glycerol
Concentration:	0.5 mg/ml
Conjugation:	Biotin
Storage:	Store at -20°C as received.
Stability:	Stable for 12 months from date of receipt.
Gene Name:	KIT proto-oncogene, receptor tyrosine kinase
Database Link:	NP_000213 Entrez Gene 3815 Human P10721
Synonyms:	C-Kit; CD117; PBT; SCFR
Matched ELISA Pair:	TA600050
Protein Families:	Adult stem cells, Druggable Genome, Embryonic stem cells, ES Cell Differentiation/IPS, Protein Kinase, Stem cell - Pluripotency, Transmembrane
Protein Pathways:	Acute myeloid leukemia, Cytokine-cytokine receptor interaction, Endocytosis, Hematopoietic cell lineage, Melanogenesis, Pathways in cancer



[View online »](#)

Product images:



KIT Luminex Elisa with Anti-Tag 1B12 Capture ([TA600050]) and 3F9 Detection (TA700223) Antibodies. Substrate used: Recombinant Human KIT ([LY420696])