

Product datasheet for **TA700222**

SRY Biotinylated Mouse Monoclonal Detection Antibody (Biotin conjugated) [Clone ID: OTI1H10]

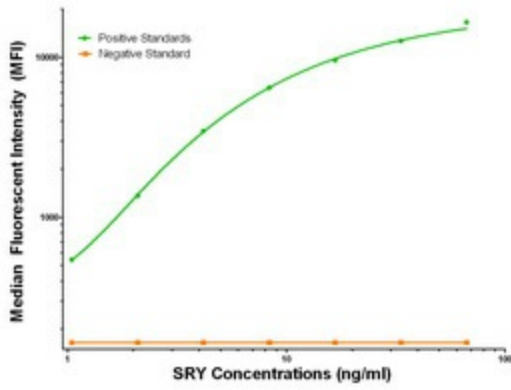
Product data:

Product Type:	Primary Antibodies
Clone Name:	OTI1H10
Applications:	LMNX
Recommended Dilution:	1:250 - 1:1000
Reactivity:	Human
Host:	Mouse
Isotype:	IgG1
Clonality:	Monoclonal
Immunogen:	Full length human recombinant protein of human SRY (NM_005986) produced in HEK293T cell.
Formulation:	Stored in PBS (pH 7.4) with 0.05% sodium azide, 10mg/ml BSA, 50% glycerol
Concentration:	0.5 mg/ml
Conjugation:	Biotin
Storage:	Store at -20°C as received.
Stability:	Stable for 12 months from date of receipt.
Gene Name:	sex determining region Y
Database Link:	NP_003131 Entrez Gene 6736 Human Q05066
Synonyms:	SRXX1; SRXY1; TDF; TDY
Matched ELISA Pair:	TA600050



[View online »](#)

Product images:



SRY Luminex Elisa with Anti-Tag 1B12 Capture ([TA600050]) and 1H10 Detection (TA700222) Antibodies. Substrate used: Recombinant Human SRY ([TP318236])