

## Product datasheet for **TA700220**

### **CD105 (ENG) Biotinylated Mouse Monoclonal Detection Antibody (Biotin conjugated) [Clone ID: OT18A1]**

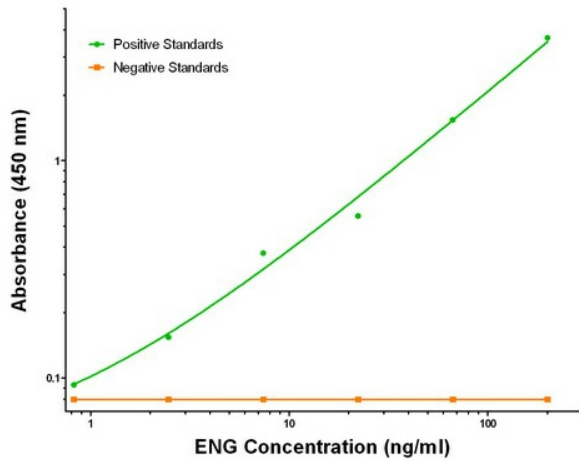
#### Product data:

Product Type:	Primary Antibodies
Clone Name:	OT18A1
Applications:	ELISA, LMNX
Recommended Dilution:	1:250 - 1:1000
Reactivity:	Human
Host:	Mouse
Isotype:	IgG1
Clonality:	Monoclonal
Immunogen:	Full length human recombinant protein of human ENG (NM_000118) produced in HEK293T cell.
Formulation:	Stored in PBS (pH 7.4) with 0.05% sodium azide, 10mg/ml BSA, 50% glycerol
Concentration:	0.5 mg/ml
Conjugation:	Biotin
Storage:	Store at -20°C as received.
Stability:	Stable for 12 months from date of receipt.
Gene Name:	endoglin
Database Link:	<a href="#">NP_000109</a> <a href="#">Entrez Gene 2022 Human P17813</a>
Synonyms:	END; HHT1; ORW1
Matched ELISA Pair:	TA600221
Protein Families:	Druggable Genome, ES Cell Differentiation/IPS, Transmembrane

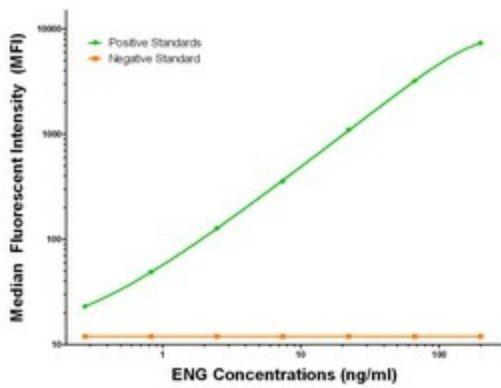


[View online »](#)

Product images:



ENG ELISA with 6G8 Capture ([TA600221]) and 8A1 Detection (TA700220) Antibodies. Substrate used: Recombinant Human ENG ([TP321669])



ENG Luminex Elisa with 6G8 Capture ([TA600221]) and 8A1 Detection (TA700220) Antibodies. Substrate used: Recombinant Human ENG ([TP321669])