

Product datasheet for **TA700218**

CD105 (ENG) Biotinylated detection Mouse Monoclonal Antibody [Clone ID: OTI3D5]

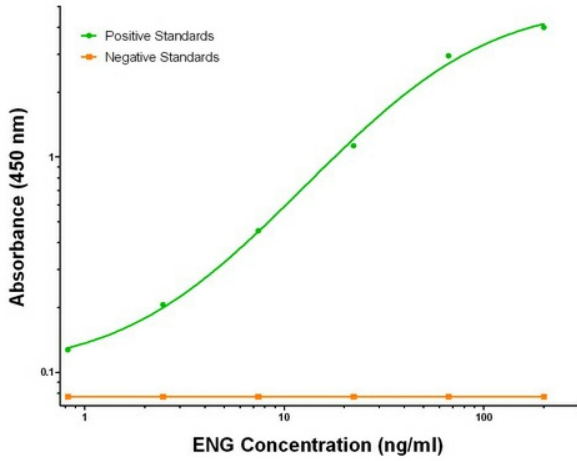
Product data:

Product Type:	Primary Antibodies
Clone Name:	OTI3D5
Applications:	ELISA, LMNX
Recommended Dilution:	1:250 - 1:1000
Reactivity:	Human
Host:	Mouse
Isotype:	IgG1
Clonality:	Monoclonal
Immunogen:	Full length human recombinant protein of human ENG (NM_000118) produced in HEK293T cell.
Formulation:	Stored in PBS (pH 7.4) with 0.05% sodium azide, 10mg/ml BSA, 50% glycerol
Concentration:	0.5 mg/ml
Storage:	Store at -20°C as received.
Stability:	Stable for 12 months from date of receipt.
Gene Name:	endoglin
Database Link:	NP_000109 Entrez Gene 2022 Human
Synonyms:	END; HHT1; ORW1
Matched ELISA Pair:	TA600218, TA600220, TA600221
Protein Families:	Druggable Genome, ES Cell Differentiation/IPS, Transmembrane

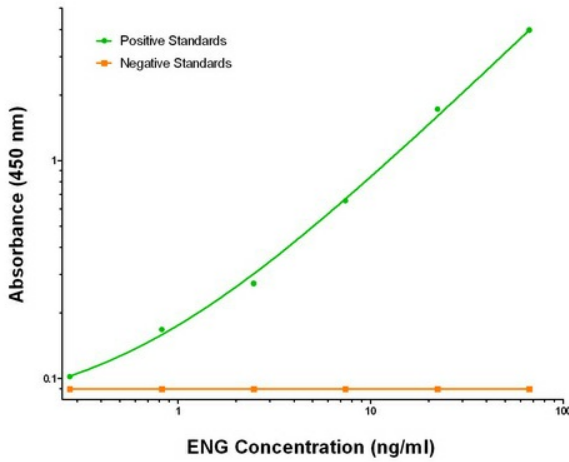


[View online »](#)

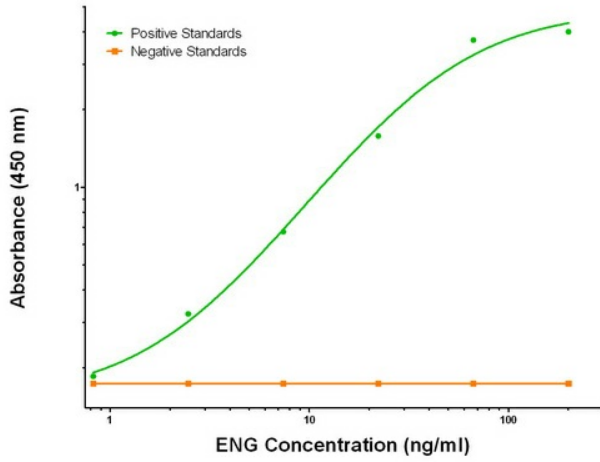
Product images:



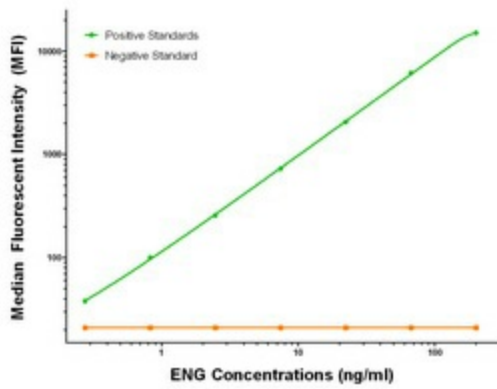
ENG ELISA with 3H5 Capture ([TA600220]) and 3D5 Detection (TA700218) Antibodies. Substrate used: Recombinant Human ENG ([TP321669])



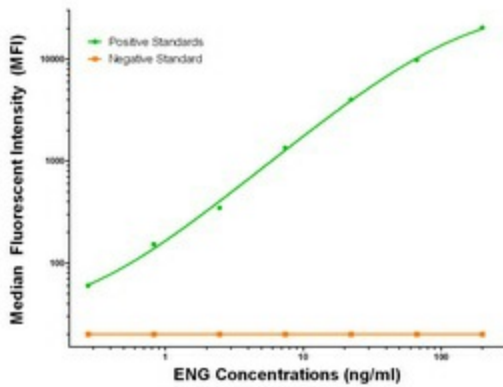
ENG ELISA with 6G8 Capture ([TA600221]) and 3D5 Detection (TA700218) Antibodies. Substrate used: Recombinant Human ENG ([TP321669])



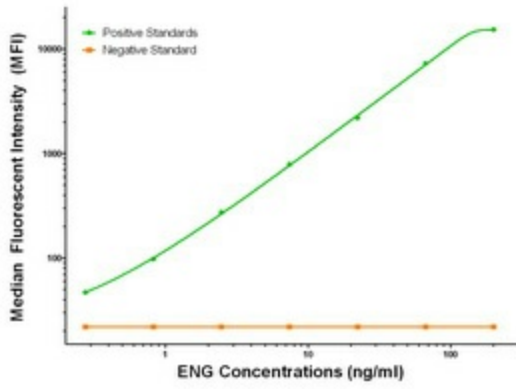
ENG ELISA with 9E5 Capture ([TA600218]) and 3D5 Detection (TA700218) Antibodies. Substrate used: Recombinant Human ENG ([TP321669])



ENG Luminex Elisa with 3H5 Capture ([TA600220]) and 3D5 Detection (TA700218) Antibodies. Substrate used: Recombinant Human ENG ([TP321669])



ENG Luminex Elisa with 6G8 Capture ([TA600221]) and 3D5 Detection (TA700218) Antibodies. Substrate used: Recombinant Human ENG ([TP321669])



ENG Luminex Elisa with 9E5 Capture ([TA600218]) and 3D5 Detection (TA700218) Antibodies. Substrate used: Recombinant Human ENG ([TP321669])