

Product datasheet for **TA700217**

Her2 (ERBB2) Biotinylated Mouse Monoclonal Detection Antibody (Biotin conjugated) [Clone ID: OTI6F3]

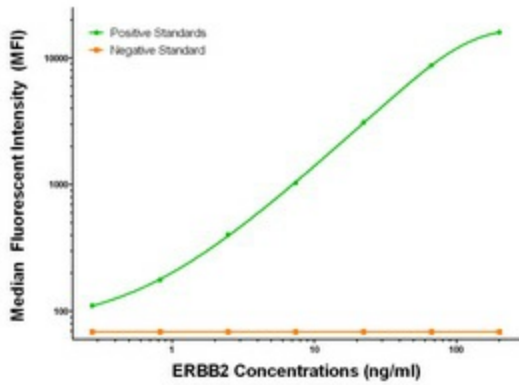
Product data:

| | |
|------------------------------|--|
| Product Type: | Primary Antibodies |
| Clone Name: | OTI6F3 |
| Applications: | LMNX |
| Recommended Dilution: | 1:250 - 1:1000 |
| Reactivity: | Human, Mouse, Rat |
| Host: | Mouse |
| Isotype: | IgG1 |
| Clonality: | Monoclonal |
| Immunogen: | Full length human recombinant protein of human ERBB2 (NM_004448) produced in HEK293T cell. |
| Formulation: | Stored in PBS (pH 7.4) with 0.05% sodium azide, 10mg/ml BSA, 50% glycerol |
| Concentration: | 0.5 mg/ml |
| Conjugation: | Biotin |
| Storage: | Store at -20°C as received. |
| Stability: | Stable for 12 months from date of receipt. |
| Gene Name: | erb-b2 receptor tyrosine kinase 2 |
| Database Link: | NP_004439 Entrez Gene 13866 MouseEntrez Gene 24337 RatEntrez Gene 2064 Human P04626 |
| Synonyms: | CD340; HER-2; HER-2/neu; HER2; MLN 19; NEU; NGL; TKR1 |
| Matched ELISA Pair: | TA600216 |
| Protein Families: | Druggable Genome, Protein Kinase, Transmembrane |
| Protein Pathways: | Adherens junction, Bladder cancer, Calcium signaling pathway, Endometrial cancer, ErbB signaling pathway, Focal adhesion, Non-small cell lung cancer, Pancreatic cancer, Pathways in cancer, Prostate cancer |



[View online »](#)

Product images:



ERBB2 Luminex Elisa with 5A3 Capture ([TA600216]) and 6F3 Detection (TA700217) Antibodies. Substrate used: Recombinant Human ERBB2 ([TP312583])