

## Product datasheet for **TA700212**

### **Her2 (ERBB2) Biotinylated Mouse Monoclonal Detection Antibody (Biotin conjugated) [Clone ID: OTI4G7]**

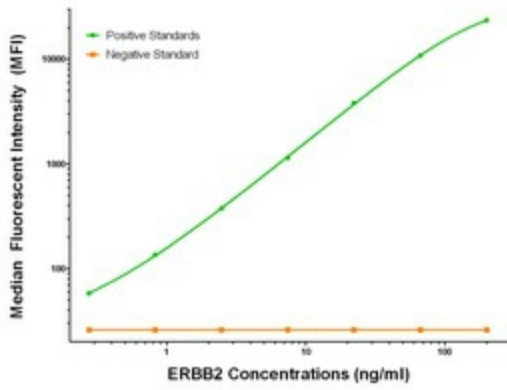
#### **Product data:**

<b>Product Type:</b>	Primary Antibodies
<b>Clone Name:</b>	OTI4G7
<b>Applications:</b>	LMNX
<b>Recommended Dilution:</b>	1:250 - 1:1000
<b>Reactivity:</b>	Human, Mouse, Rat
<b>Host:</b>	Mouse
<b>Isotype:</b>	IgG1
<b>Clonality:</b>	Monoclonal
<b>Immunogen:</b>	Full length human recombinant protein of human ERBB2 (NM_004448) produced in HEK293T cell.
<b>Formulation:</b>	Stored in PBS (pH 7.4) with 0.05% sodium azide, 10mg/ml BSA, 50% glycerol
<b>Concentration:</b>	0.5 mg/ml
<b>Conjugation:</b>	Biotin
<b>Storage:</b>	Store at -20°C as received.
<b>Stability:</b>	Stable for 12 months from date of receipt.
<b>Gene Name:</b>	erb-b2 receptor tyrosine kinase 2
<b>Database Link:</b>	<a href="#">NP_004439</a> <a href="#">Entrez Gene 13866 MouseEntrez Gene 24337 RatEntrez Gene 2064 Human P04626</a>
<b>Synonyms:</b>	CD340; HER-2; HER-2/neu; HER2; MLN 19; NEU; NGL; TKR1
<b>Matched ELISA Pair:</b>	TA600209
<b>Protein Families:</b>	Druggable Genome, Protein Kinase, Transmembrane
<b>Protein Pathways:</b>	Adherens junction, Bladder cancer, Calcium signaling pathway, Endometrial cancer, ErbB signaling pathway, Focal adhesion, Non-small cell lung cancer, Pancreatic cancer, Pathways in cancer, Prostate cancer



[View online »](#)

Product images:



ERBB2 Luminex Elisa with 6H10 Capture ([TA600209]) and 4G7 Detection (TA700212) Antibodies. Substrate used: Recombinant Human ERBB2 ([TP312583])