

Product datasheet for **TA700202**

Kallikrein 8 (KLK8) Biotinylated Mouse Monoclonal Detection Antibody (Biotin conjugated) [Clone ID: OTI2C10]

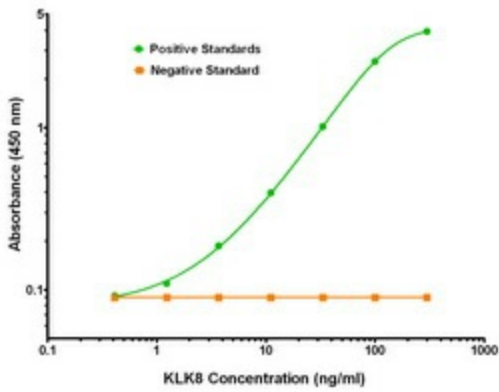
Product data:

Product Type:	Primary Antibodies
Clone Name:	OTI2C10
Applications:	ELISA
Recommended Dilution:	ELISA 1:250-1:1000
Reactivity:	Human
Host:	Mouse
Isotype:	IgG2a
Clonality:	Monoclonal
Immunogen:	Full length human recombinant protein of human KLK8 (NP_007196) produced in HEK293T cell.
Formulation:	Stored in PBS (pH 7.4) with 0.05% sodium azide, 10mg/ml BSA, 50% glycerol
Concentration:	0.5 mg/ml
Conjugation:	Biotin
Storage:	Store at -20°C as received.
Stability:	Stable for 12 months from date of receipt.
Gene Name:	kallikrein related peptidase 8
Database Link:	NP_009127 Entrez Gene 11202 Human O60259
Synonyms:	HNP; NP; NRPN; PRSS19; TADG14
Matched ELISA Pair:	TA600200, TA600201, TA600202, TA600203
Protein Families:	Druggable Genome, Secreted Protein, Transmembrane

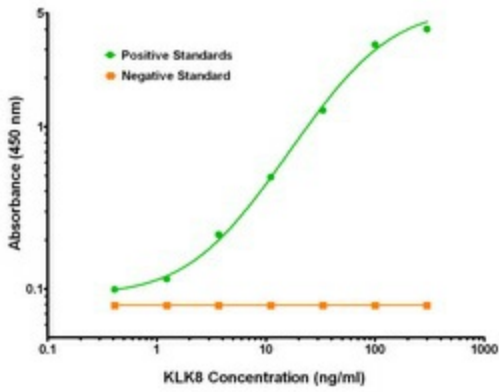


[View online »](#)

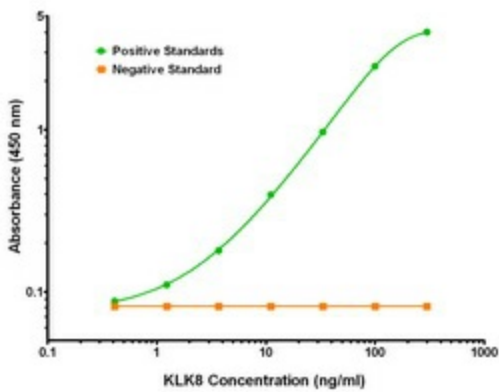
Product images:



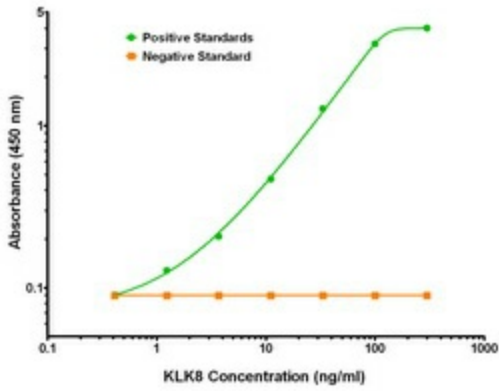
KLK8 Elisa with 10D3 Capture ([TA600200]) and 2C10 Detection (TA700202) Antibodies. Substrate used: Recombinant Human KLK8 ([TP308152])



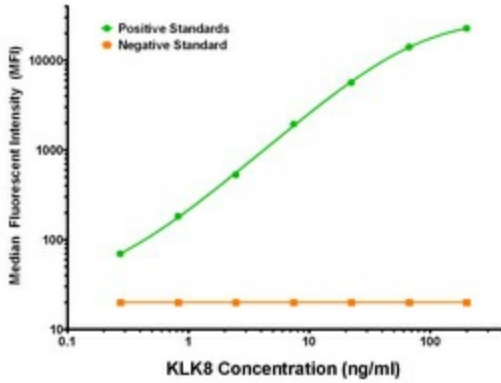
KLK8 Elisa with 16G2 Capture ([TA600202]) and 2C10 Detection (TA700202) Antibodies. Substrate used: Recombinant Human KLK8 ([TP308152])



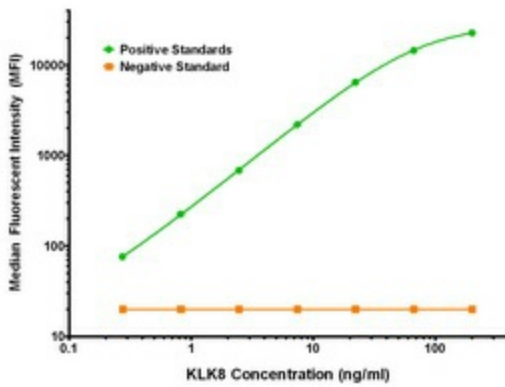
KLK8 Elisa with 1D2 Capture ([TA600201]) and 2C10 Detection (TA700202) Antibodies. Substrate used: Recombinant Human KLK8 ([TP308152])



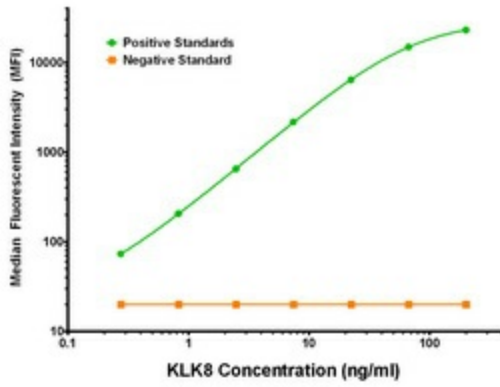
KLK8 Elisa with 2C6 Capture ([TA600203]) and 2C10 Detection (TA700202) Antibodies. Substrate used: Recombinant Human KLK8 ([TP308152])



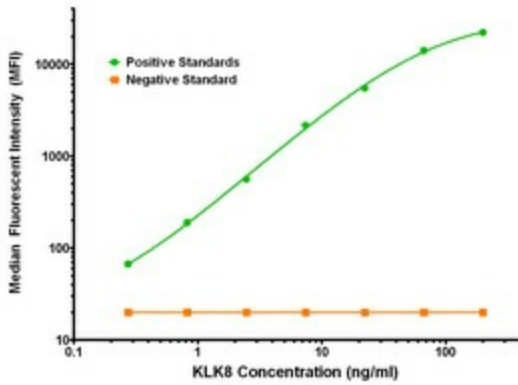
KLK8 Luminex Elisa with 10D3 Capture ([TA600200]) and 2C10 Detection (TA700202) Antibodies. Substrate used: Recombinant Human KLK8 ([TP308152])



KLK8 Luminex Elisa with 16G2 Capture ([TA600202]) and 2C10 Detection (TA700202) Antibodies. Substrate used: Recombinant Human KLK8 ([TP308152])



KLK8 Luminex Elisa with 1D2 Capture ([TA600201]) and 2C10 Detection (TA700202) Antibodies. Substrate used: Recombinant Human KLK8 ([TP308152])



KLK8 Luminex Elisa with 2C6 Capture ([TA600203]) and 2C10 Detection (TA700202) Antibodies. Substrate used: Recombinant Human KLK8 ([TP308152])