

## Product datasheet for **TA700201**

### **Kallikrein 8 (KLK8) Biotinylated Mouse Monoclonal Detection Antibody (Biotin conjugated)** **[Clone ID: OTI1D2]**

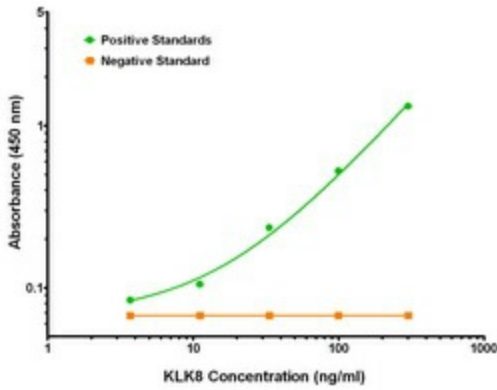
#### Product data:

Product Type:	Primary Antibodies
Clone Name:	OTI1D2
Applications:	ELISA
Recommended Dilution:	ELISA 1:250-1:1000
Reactivity:	Human
Host:	Mouse
Isotype:	IgG2a
Clonality:	Monoclonal
Immunogen:	Full length human recombinant protein of human KLK8 (NP_007196) produced in HEK293T cell.
Formulation:	Stored in PBS (pH 7.4) with 0.05% sodium azide, 10mg/ml BSA, 50% glycerol
Concentration:	0.5 mg/ml
Conjugation:	Biotin
Storage:	Store at -20°C as received.
Stability:	Stable for 12 months from date of receipt.
Gene Name:	kallikrein related peptidase 8
Database Link:	<a href="#">NP_009127</a> <a href="#">Entrez Gene 11202 Human</a> <a href="#">O60259</a>
Synonyms:	HNP; NP; NRPN; PRSS19; TADG14
Matched ELISA Pair:	TA600204
Protein Families:	Druggable Genome, Secreted Protein, Transmembrane

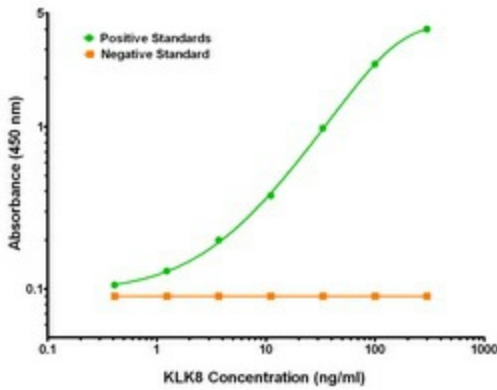


[View online »](#)

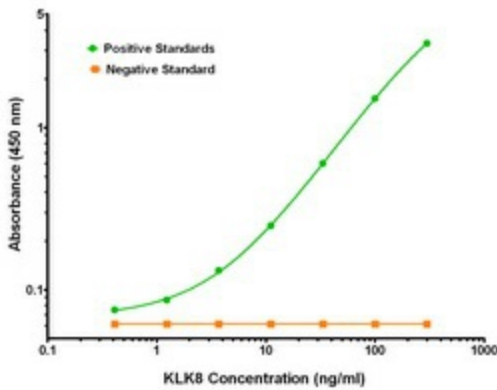
**Product images:**



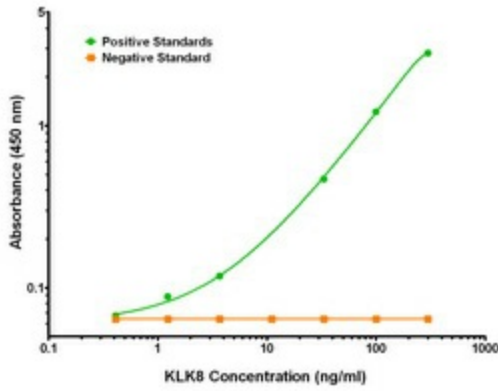
KLK8 Elisa with 14G10 Capture ([TA600207]) and 1D2 Detection (TA700201) Antibodies. Substrate used: Recombinant Human KLK8 ([TP308152])



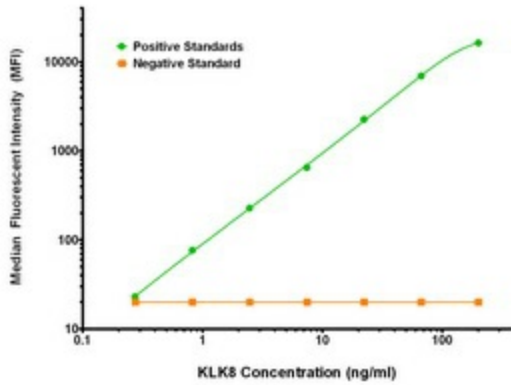
KLK8 Elisa with 2C10 Capture ([TA600205]) and 1D2 Detection (TA700201) Antibodies. Substrate used: Recombinant Human KLK8 ([TP308152])



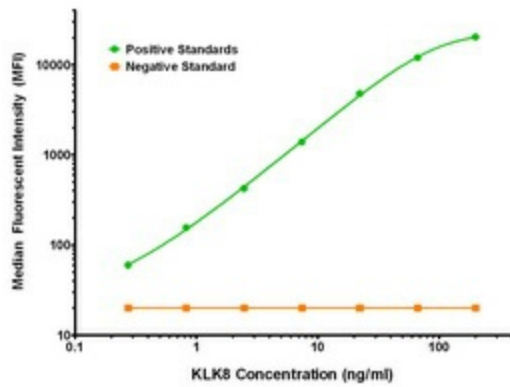
KLK8 Elisa with 3C10 Capture ([TA600206]) and 1D2 Detection ([TA700200]) Antibodies. Substrate used: Recombinant Human KLK8 ([TP308152])



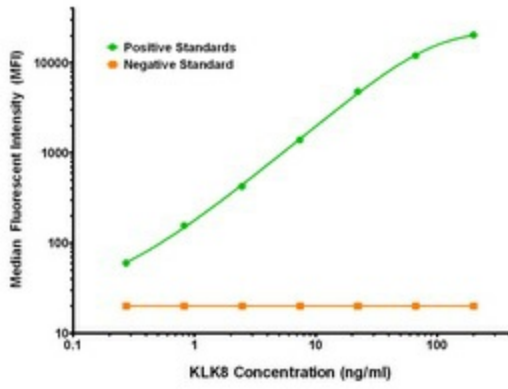
KLK8 Elisa with 5B1 Capture ([TA600204]) and 1D2 Detection (TA700201) Antibodies. Substrate used: Recombinant Human KLK8 ([TP308152])



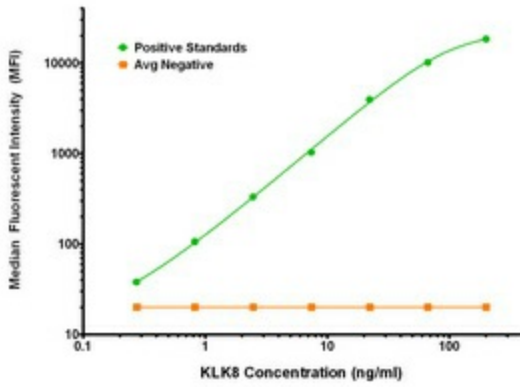
KLK8 Luminex Elisa with 14G10 Capture ([TA600207]) and 1D2 Detection (TA700201) Antibodies. Substrate used: Recombinant Human KLK8 ([TP308152])



KLK8 Luminex Elisa with 2C10 Capture ([TA600205]) and 1D2 Detection (TA700201) Antibodies. Substrate used: Recombinant Human KLK8 ([TP308152])



KLK8 Luminex Elisa with 3C10 Capture ([TA600206]) and 1D2 Detection (TA700201) Antibodies. Substrate used: Recombinant Human KLK8 ([TP308152])



KLK8 Luminex Elisa with 5B1 Capture ([TA600204]) and 1D2 Detection (TA700201) Antibodies. Substrate used: Recombinant Human KLK8 ([TP308152])