

Product datasheet for **TA700199**

Isocitrate dehydrogenase (IDH1) Biotinylated Mouse Monoclonal Detection Antibody (Biotin conjugated) [Clone ID: OTI24A2]

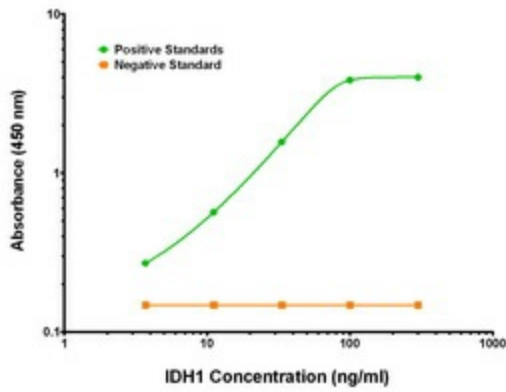
Product data:

Product Type:	Primary Antibodies
Clone Name:	OTI24A2
Applications:	ELISA
Recommended Dilution:	ELISA 1:250-1:1000
Reactivity:	Human, Mouse, Rat
Host:	Mouse
Isotype:	IgG2b
Clonality:	Monoclonal
Immunogen:	Synthetic peptide around the R132 region of the human IDH conjugated to KLH
Formulation:	Stored in PBS (pH 7.4) with 0.05% sodium azide, 10mg/ml BSA, 50% glycerol
Concentration:	0.5 mg/ml
Conjugation:	Biotin
Storage:	Store at -20°C as received.
Stability:	Stable for 12 months from date of receipt.
Gene Name:	isocitrate dehydrogenase (NADP(+)) 1
Database Link:	NP_005887 Entrez Gene 15926 Mouse Entrez Gene 24479 Rat Entrez Gene 3417 Human O75874
Synonyms:	HEL-216; HEL-S-26; IDCD; IDH; IDP; IDPC; PICD
Matched ELISA Pair:	TA600198
Protein Pathways:	Citrate cycle (TCA cycle), Glutathione metabolism, Metabolic pathways

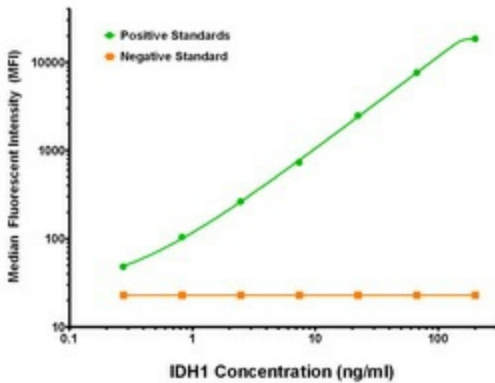


[View online »](#)

Product images:



IDH1 Elisa with 2H9 Capture ([TA600198]) and 24A2 Detection (TA700199) Antibodies. Substrate used: Recombinant Human IDH1 ([TP310582])



IDH1 Luminex Elisa with 2H9 Capture ([TA600198]) and 24A2 Detection (TA700199) Antibodies. Substrate used: Recombinant Human IDH1 ([TP310582])