

## Product datasheet for **TA700197**

### **E Cadherin (CDH1) Biotinylated Mouse Monoclonal Detection Antibody (Biotin conjugated) [Clone ID: OTI2F9]**

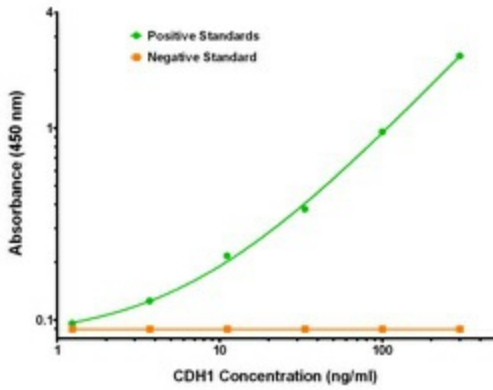
#### **Product data:**

<b>Product Type:</b>	Primary Antibodies
<b>Clone Name:</b>	OTI2F9
<b>Applications:</b>	ELISA, LMNX
<b>Recommended Dilution:</b>	1:250 - 1:1000
<b>Reactivity:</b>	Human
<b>Host:</b>	Mouse
<b>Isotype:</b>	IgG1
<b>Clonality:</b>	Monoclonal
<b>Immunogen:</b>	Full length human recombinant protein of human CDH1 (NP_004351) produced in HEK293T cell.
<b>Formulation:</b>	Stored in PBS (pH 7.4) with 0.05% sodium azide, 10mg/ml BSA, 50% glycerol
<b>Concentration:</b>	0.5 mg/ml
<b>Conjugation:</b>	Biotin
<b>Storage:</b>	Store at -20°C as received.
<b>Stability:</b>	Stable for 12 months from date of receipt.
<b>Gene Name:</b>	cadherin 1
<b>Database Link:</b>	<a href="#">NP_004351</a> <a href="#">Entrez Gene 999 Human P12830</a>
<b>Synonyms:</b>	Arc-1; CD324; CDHE; ECAD; LCAM; UVO
<b>Matched ELISA Pair:</b>	TA600196
<b>Protein Families:</b>	Druggable Genome, ES Cell Differentiation/IPS, Transmembrane
<b>Protein Pathways:</b>	Adherens junction, Bladder cancer, Cell adhesion molecules (CAMs), Endometrial cancer, Melanoma, Pathogenic Escherichia coli infection, Pathways in cancer, Thyroid cancer

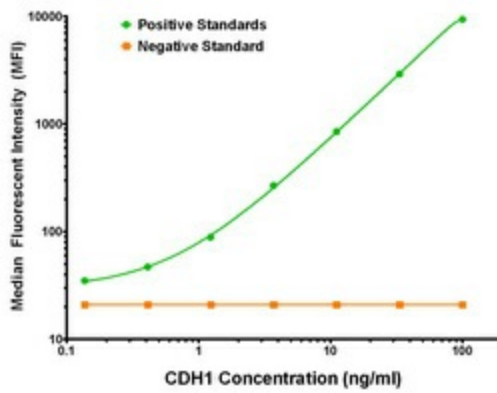


[View online »](#)

**Product images:**



CDH1 Elisa with 4F1 Capture ([TA600196]) and 2F9 Detection (TA700197) Antibodies. Substrate used: Recombinant Human CDH1 ([TP320731])



CDH1 Luminex Elisa with 4F1 Capture ([TA600196]) and 2F9 Detection (TA700197) Antibodies. Substrate used: Recombinant Human CDH1 ([TP320731])