

Product datasheet for **TA700184**

STING (TMEM173) Biotinylated Mouse Monoclonal Detection Antibody (Biotin conjugated) **[Clone ID: OTI4H8]**

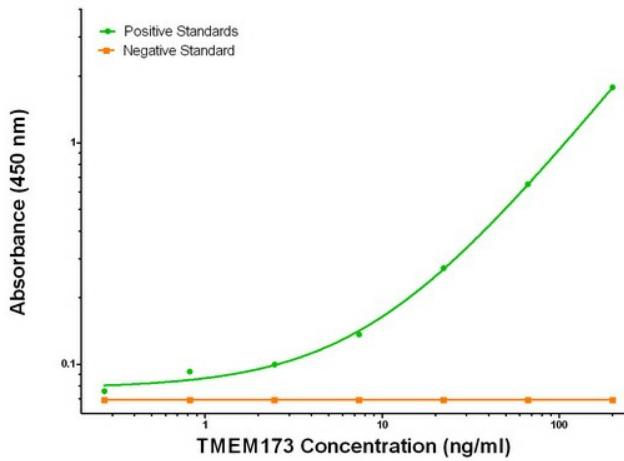
Product data:

Product Type:	Primary Antibodies
Clone Name:	OTI4H8
Applications:	ELISA, LMNX
Recommended Dilution:	1:250 - 1:1000
Reactivity:	Human
Host:	Mouse
Isotype:	IgG1
Clonality:	Monoclonal
Immunogen:	Full length human recombinant protein of human TMEM173 (NM_198282) produced in HEK293T cell.
Formulation:	Stored in PBS (pH 7.4) with 0.05% sodium azide, 10mg/ml BSA, 50% glycerol
Concentration:	0.5 mg/ml
Conjugation:	Biotin
Storage:	Store at -20°C as received.
Stability:	Stable for 12 months from date of receipt.
Gene Name:	stimulator of interferon response cGAMP interactor 1
Database Link:	NP_938023 Entrez Gene 340061 Human Q86WV6
Synonyms:	ERIS; hMITA; hSTING; MITA; MPYS; NET23; SAVI; STING
Matched ELISA Pair:	TA600184, TA600185, TA600186, TA600187
Protein Pathways:	Cytosolic DNA-sensing pathway, RIG-I-like receptor signaling pathway

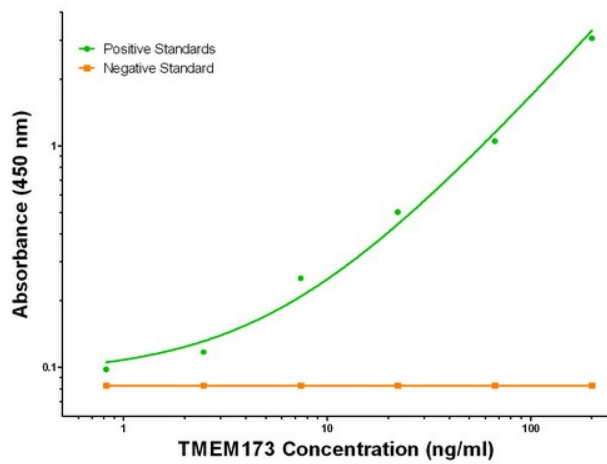


[View online »](#)

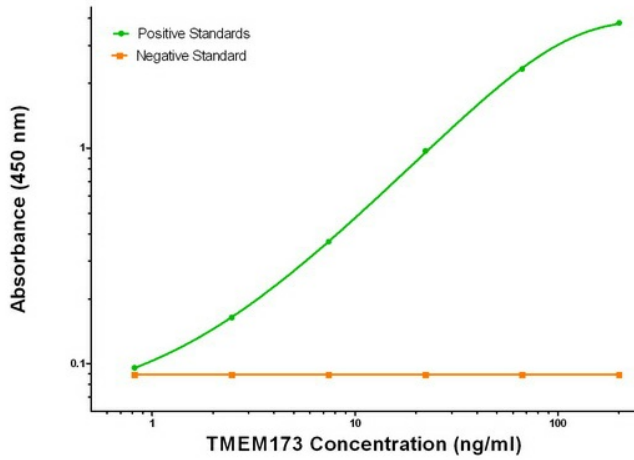
Product images:



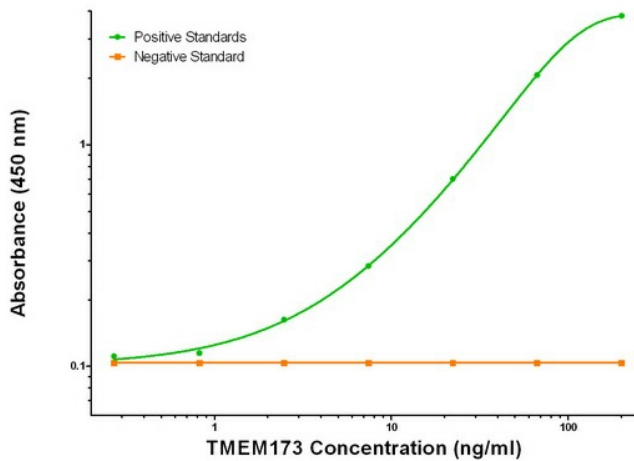
TMEM173 ELISA with 1A7 Capture ([TA600187]) and 4H8 Detection (TA700184) Antibodies. Substrate used: Recombinant Human TMEM173 ([TP308418])



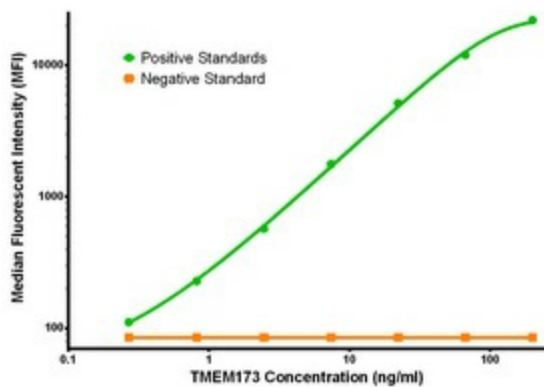
TMEM173 ELISA with 4E12 Capture ([TA600184]) and 4H8 Detection (TA700184) Antibodies. Substrate used: Recombinant Human TMEM173 ([TP308418])



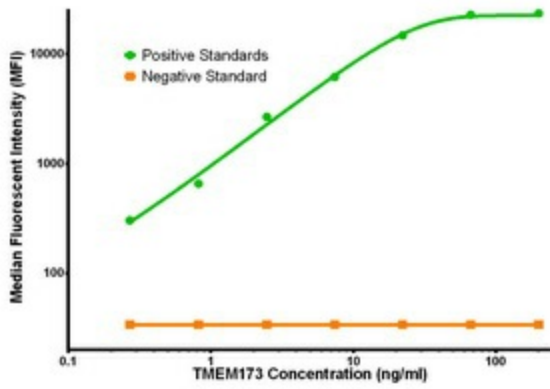
TMEM173 ELISA with 4A7 Capture ([TA600185]) and 4H8 Detection (TA700184) Antibodies. Substrate used: Recombinant Human TMEM173 ([TP308418])



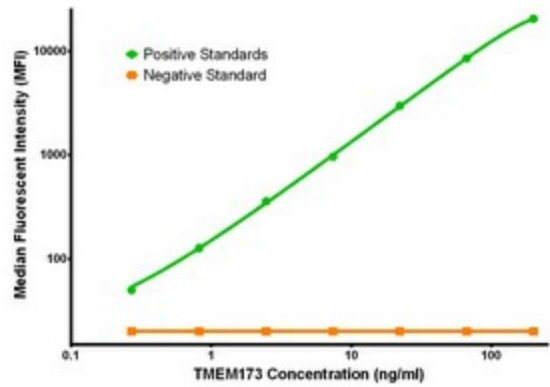
TMEM173 ELISA with 1G5 Capture ([TA600186]) and 4H8 Detection (TA700184) Antibodies. Substrate used: Recombinant Human TMEM173 ([TP308418])



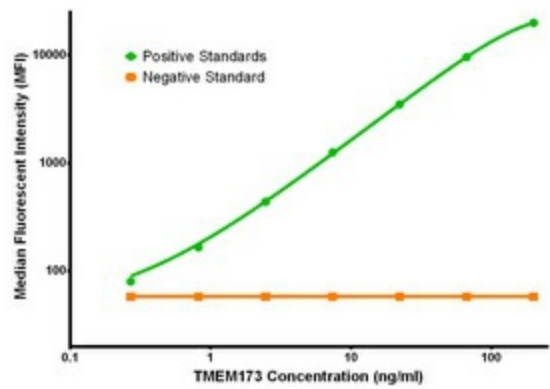
TMEM173 Luminex Elisa with 4E12 Capture ([TA600184]) and 4H8 Detection (TA700184) Antibodies. Substrate used: Recombinant Human TMEM173 ([TP308418])



TMEM173 Luminex Elisa with 4A7 Capture ([TA600185]) and 4H8 Detection (TA700184) Antibodies. Substrate used: Recombinant Human TMEM173 ([TP308418])



TMEM173 Luminex Elisa with 1G5 Capture ([TA600186]) and 4H8 Detection (TA700184) Antibodies. Substrate used: Recombinant Human TMEM173 ([TP308418])



TMEM173 Luminex Elisa with 1A7 Capture ([TA600187]) and 4H8 Detection (TA700184) Antibodies. Substrate used: Recombinant Human TMEM173 ([TP308418])