

Product datasheet for **TA700181**

STK39 Biotinylated Mouse Monoclonal Detection Antibody (Biotin conjugated) [Clone ID: OTI4E3]

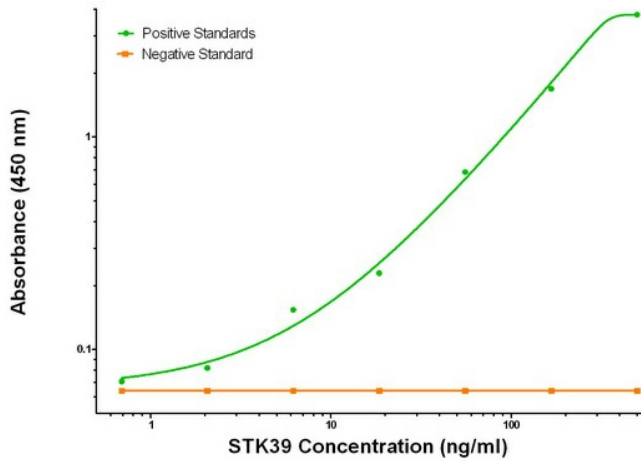
Product data:

Product Type:	Primary Antibodies
Clone Name:	OTI4E3
Applications:	ELISA, LMNX
Recommended Dilution:	1:250 - 1:1000
Reactivity:	Human, Mouse, Rat
Host:	Mouse
Isotype:	IgG1
Clonality:	Monoclonal
Immunogen:	Full length human recombinant protein of human STK39 (NM_013233) produced in HEK293T cell.
Formulation:	Stored in PBS (pH 7.4) with 0.05% sodium azide, 10mg/ml BSA, 50% glycerol
Concentration:	0.5 mg/ml
Conjugation:	Biotin
Storage:	Store at -20°C as received.
Stability:	Stable for 12 months from date of receipt.
Gene Name:	serine/threonine kinase 39
Database Link:	NP_037365 Entrez Gene 53416 MouseEntrez Gene 54348 RatEntrez Gene 27347 Human Q9UEW8
Synonyms:	DCHT; PASK; SPAK
Matched ELISA Pair:	TA600180
Protein Families:	Druggable Genome, Protein Kinase

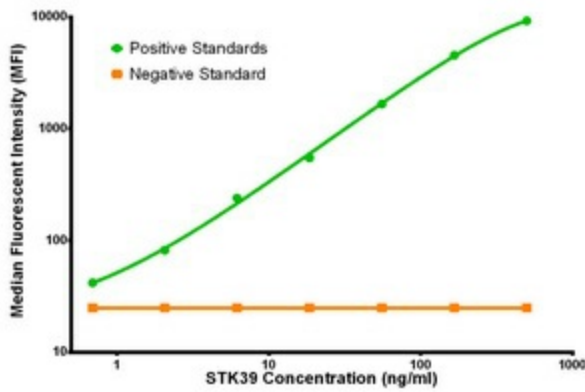


[View online »](#)

Product images:



STK39 ELISA with 3C12 Capture ([TA600180]) and 4E3 Detection (TA700181) Antibodies. Substrate used: Recombinant Human STK39 ([TP323981])



STK39 Luminex Elisa with 3C12 Capture ([TA600180]) and 4E3 Detection (TA700181) Antibodies. Substrate used: Recombinant Human STK39 ([TP323981])