

Product datasheet for **TA700164**

PSMD2 Biotinylated Mouse Monoclonal Detection Antibody (Biotin conjugated) [Clone ID: OTI1G5]

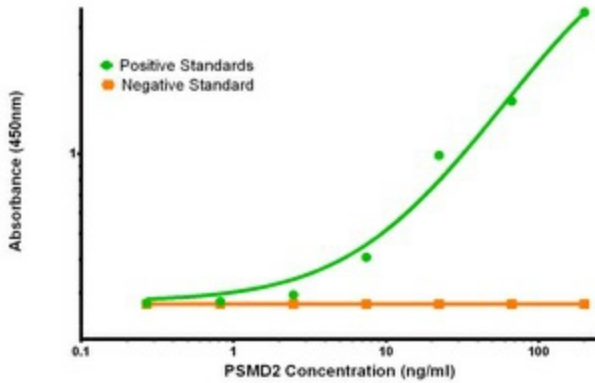
Product data:

Product Type:	Primary Antibodies
Clone Name:	OTI1G5
Applications:	ELISA, LMNX
Recommended Dilution:	1:250 - 1:1000
Reactivity:	Human, Mouse, Rat
Host:	Mouse
Isotype:	IgG1
Clonality:	Monoclonal
Immunogen:	Full length human recombinant protein of human PSMD2(NP_002799) produced in HEK293T cell.
Formulation:	Stored in PBS (pH 7.4) with 0.05% sodium azide, 10mg/ml BSA, 50% glycerol
Concentration:	0.5 mg/ml
Conjugation:	Biotin
Storage:	Store at -20°C as received.
Stability:	Stable for 12 months from date of receipt.
Gene Name:	proteasome 26S subunit ubiquitin receptor, non-ATPase 2
Database Link:	NP_002799 Entrez Gene 21762 MouseEntrez Gene 287984 RatEntrez Gene 5708 Human Q13200
Synonyms:	P97; RPN1; S2; TRAP2
Matched ELISA Pair:	TA600164, TA600165, TA600166, TA600167, TA600168, TA600169
Protein Families:	Druggable Genome
Protein Pathways:	Proteasome

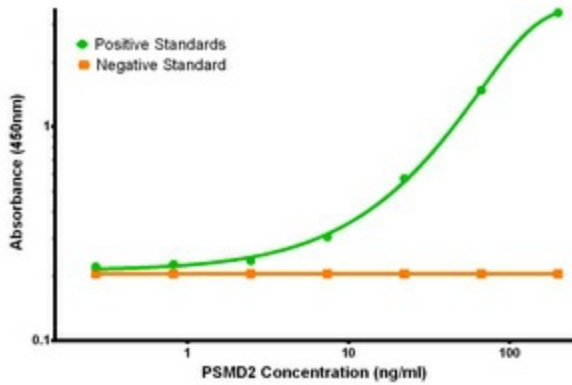


[View online »](#)

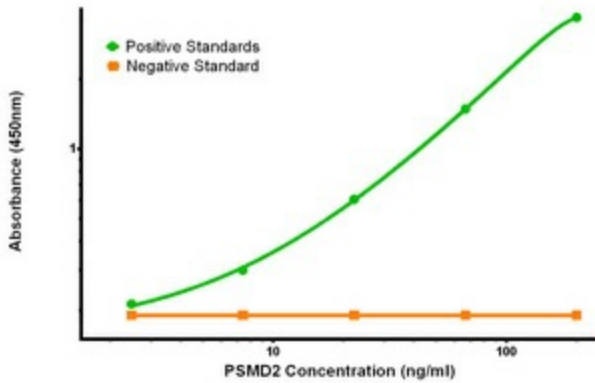
Product images:



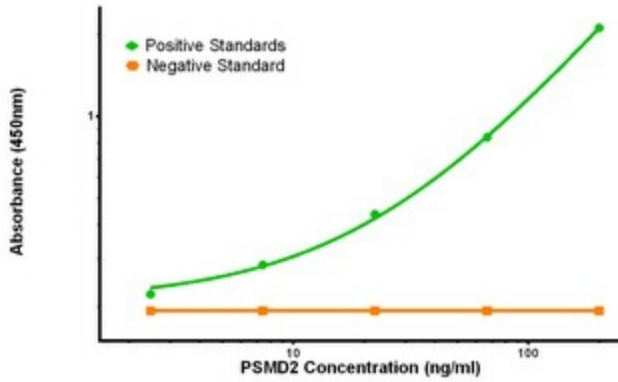
PSMD2 Elisa with 1A12 Capture ([TA600165]) and 1G5 Detection (TA700164) Antibodies. Substrate used: Recombinant Human PSMD2 ([TP303204])



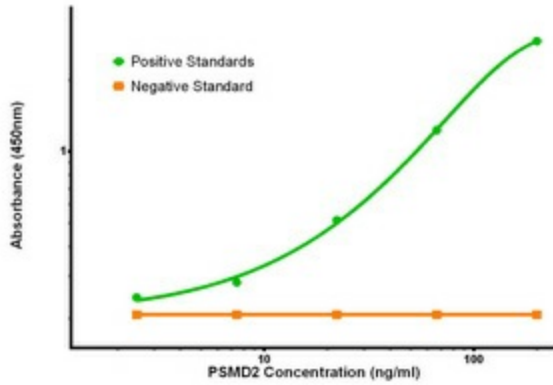
PSMD2 Elisa with 1B5 Capture ([TA600166]) and 1G5 Detection (TA700164) Antibodies. Substrate used: Recombinant Human PSMD2 ([TP303204])



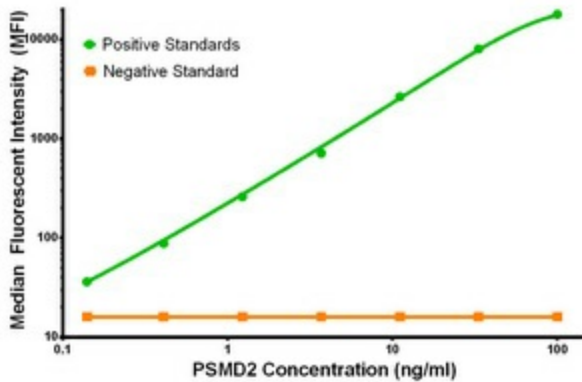
PSMD2 Elisa with 1E7 Capture ([TA600167]) and 1G5 Detection (TA700164) Antibodies. Substrate used: Recombinant Human PSMD2 ([TP303204])



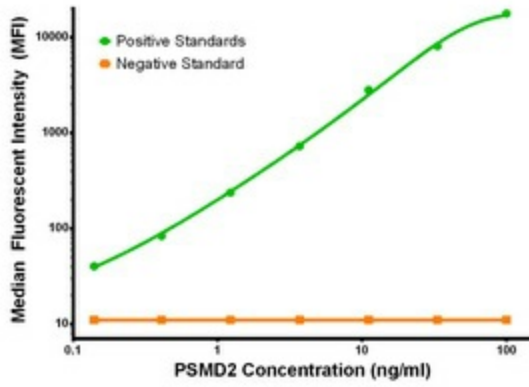
PSMD2 Elisa with 1G8 Capture ([TA600168]) and 1G5 Detection (TA700164) Antibodies. Substrate used: Recombinant Human PSMD2 ([TP303204])



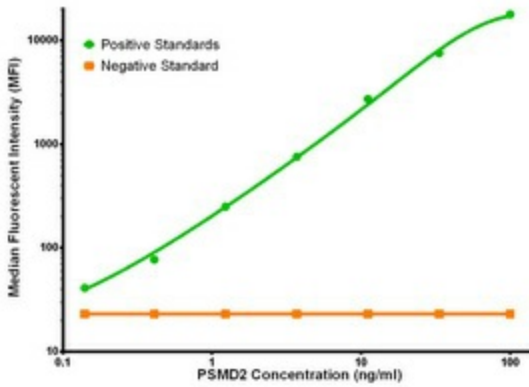
PSMD2 Elisa with 1H3 Capture ([TA600169]) and 1G5 Detection (TA700164) Antibodies. Substrate used: Recombinant Human PSMD2 ([TP303204])



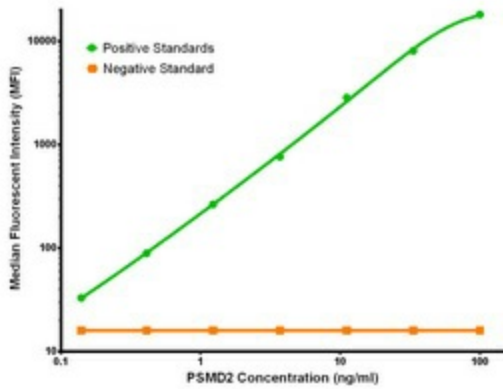
PSMD2 Luminex Elisa with 1G6 Capture ([TA600164]) and 1G5 Detection (TA700164) Antibodies. Substrate used: Recombinant Human PSMD2 ([TP303204])



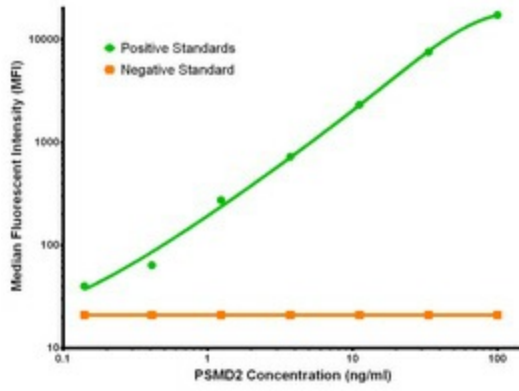
PSMD2 Luminex Elisa with 1A12 Capture ([TA600165]) and 1G5 Detection (TA700164) Antibodies. Substrate used: Recombinant Human PSMD2 ([TP303204])



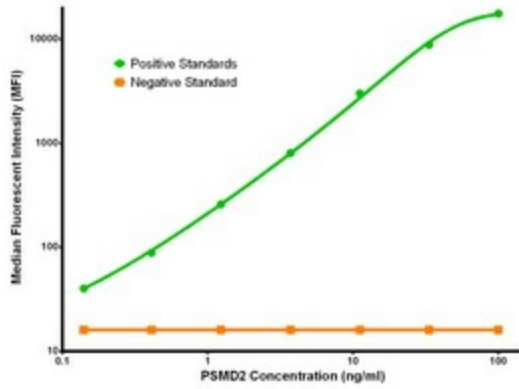
PSMD2 Luminex Elisa with 1B5 Capture ([TA600166]) and 1G5 Detection (TA700164) Antibodies. Substrate used: Recombinant Human PSMD2 ([TP303204])



PSMD2 Luminex Elisa with 1E7 Capture ([TA600167]) and 1G5 Detection (TA700164) Antibodies. Substrate used: Recombinant Human PSMD2 ([TP303204])



PSMD2 Luminex Elisa with 1G8 Capture ([TA600168]) and 1G5 Detection (TA700164) Antibodies. Substrate used: Recombinant Human PSMD2 ([TP303204])



PSMD2 Luminex Elisa with 1H3 Capture ([TA600169]) and 1G5 Detection (TA700164) Antibodies. Substrate used: Recombinant Human PSMD2 ([TP303204])