

Product datasheet for **TA700160**

Monoacylglycerol Lipase (MGLL) Biotinylated Mouse Monoclonal Detection Antibody (Biotin conjugated) [Clone ID: OTI2C9]

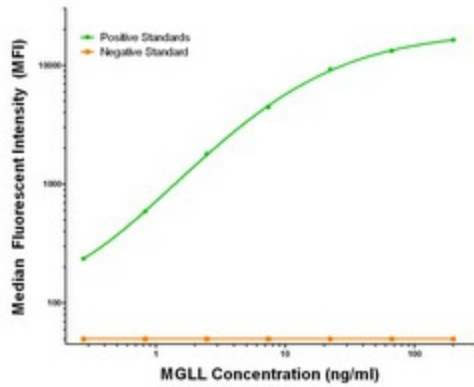
Product data:

Product Type:	Primary Antibodies
Clone Name:	OTI2C9
Applications:	LMNX
Recommended Dilution:	1:250 - 1:1000
Reactivity:	Human
Host:	Mouse
Isotype:	IgG1
Clonality:	Monoclonal
Immunogen:	Full length human recombinant protein of human MGLL (NM_007283) produced in HEK293T cell.
Formulation:	Stored in PBS (pH 7.4) with 0.05% sodium azide, 10mg/ml BSA, 50% glycerol
Concentration:	0.5 mg/ml
Conjugation:	Biotin
Storage:	Store at -20°C as received.
Stability:	Stable for 12 months from date of receipt.
Gene Name:	monoglyceride lipase
Database Link:	NP_009214 Entrez Gene 11343 Human Q99685
Synonyms:	HU-K5; HUK5; MAGL; MGL
Matched ELISA Pair:	TA600161, TA600162
Protein Families:	Druggable Genome, Protease
Protein Pathways:	Glycerolipid metabolism, Metabolic pathways

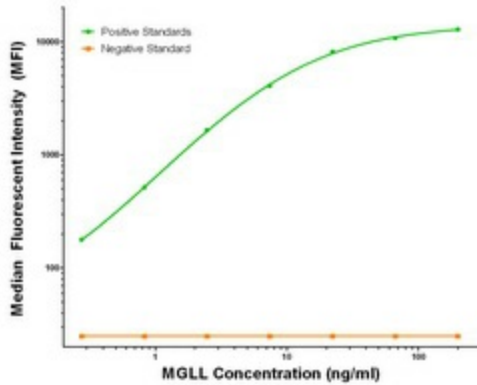


[View online »](#)

Product images:



MGLL Luminex Elisa with 2B11 Capture ([TA600161]) and 2C9 Detection (TA700160) Antibodies. Substrate used: Recombinant Human MGLL ([TP318358])



MGLL Luminex Elisa with 4D1 Capture ([TA600162]) and 2C9 Detection (TA700160) Antibodies. Substrate used: Recombinant Human MGLL ([TP318358])