

Product datasheet for **TA700155**

Leukotriene A4 hydrolase (LTA4H) Biotinylated Mouse Monoclonal Detection Antibody (Biotin conjugated) [Clone ID: OTI8F4]

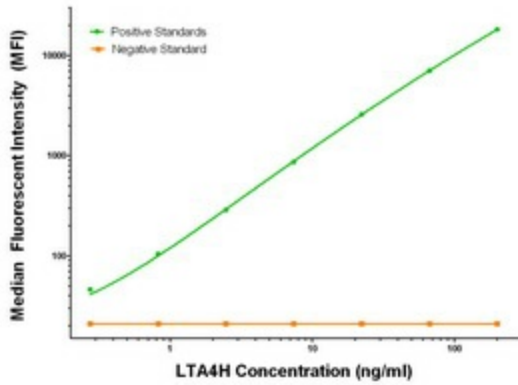
Product data:

Product Type:	Primary Antibodies
Clone Name:	OTI8F4
Applications:	LMNX
Recommended Dilution:	1:250 - 1:1000
Reactivity:	Human, Mouse, Rat
Host:	Mouse
Isotype:	IgG1
Clonality:	Monoclonal
Immunogen:	Full length human recombinant protein of human LTA4H (NM_000895) produced in HEK293T cell.
Formulation:	Stored in PBS (pH 7.4) with 0.05% sodium azide, 10mg/ml BSA, 50% glycerol
Concentration:	0.5 mg/ml
Conjugation:	Biotin
Storage:	Store at -20°C as received.
Stability:	Stable for 12 months from date of receipt.
Gene Name:	leukotriene A4 hydrolase
Database Link:	NP_000886 Entrez Gene 16993 MouseEntrez Gene 299732 RatEntrez Gene 4048 Human P09960
Synonyms:	leukotriene A4 hydrolase
Matched ELISA Pair:	TA600151, TA600152, TA600153, TA600154, TA600155
Protein Families:	Druggable Genome, Protease
Protein Pathways:	Arachidonic acid metabolism, Metabolic pathways

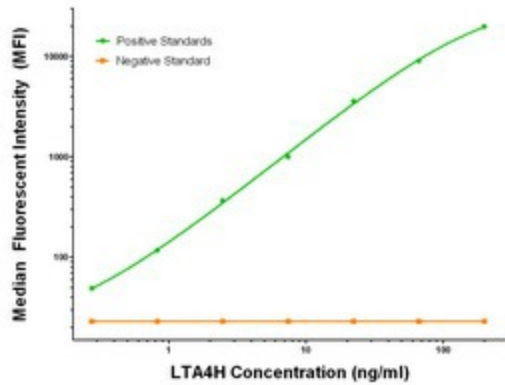


[View online »](#)

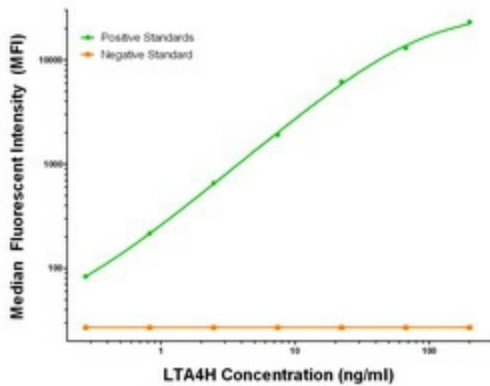
Product images:



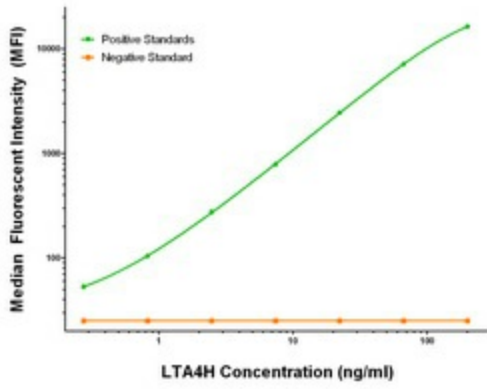
LTA4H Luminex Elisa with 2C5 Capture ([TA600151]) and 8F4 Detection (TA700155) Antibodies. Substrate used: Recombinant Human LTA4H ([TP307617])



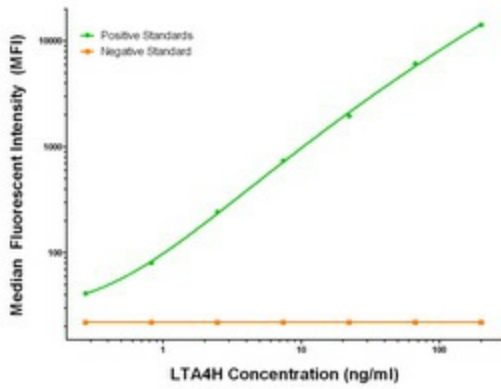
LTA4H Luminex Elisa with 3C11 Capture ([TA600152]) and 8F4 Detection (TA700155) Antibodies. Substrate used: Recombinant Human LTA4H ([TP307617])



LTA4H Luminex Elisa with 5C10 Capture ([TA600153]) and 8F4 Detection (TA700155) Antibodies. Substrate used: Recombinant Human LTA4H ([TP307617])



LTA4H Luminex Elisa with 6B5 Capture ([TA600154]) and 8F4 Detection (TA700155) Antibodies. Substrate used: Recombinant Human LTA4H ([TP307617])



LTA4H Luminex Elisa with 9C5 Capture ([TA600155]) and 8F4 Detection (TA700155) Antibodies. Substrate used: Recombinant Human LTA4H ([TP307617])